



ELECTRONIC COPY

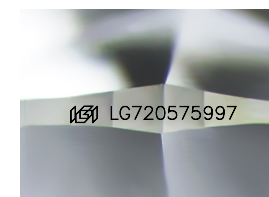
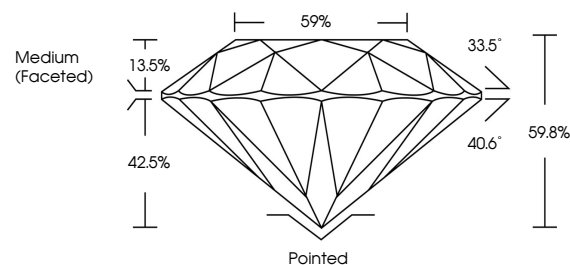
LG720575997 Report verification at igi.org



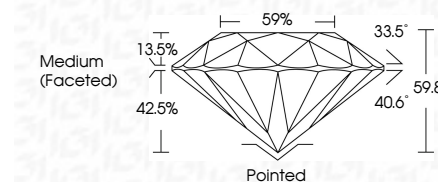
July 15, 2025 IGI Report Number LG720575997 Description LABORATORY GROWN DIAMOND Shape and Cutting Style ROUND BRILLIANT Measurements 7.41 - 7.45 X 4.44 MM GRADING RESULTS Carat Weight 1.51 CARAT Color Grade FANCY INTENSE BLUE Clarity Grade VS 1 Cut Grade IDEAL

July 15, 2025 IGI Report Number LG720575997 Description LABORATORY GROWN DIAMOND Shape and Cutting Style ROUND BRILLIANT Measurements 7.41 - 7.45 X 4.44 MM GRADING RESULTS Carat Weight 1.51 CARAT Color Grade FANCY INTENSE BLUE Clarity Grade VS 1 Cut Grade IDEAL

PROPORTIONS



Sample Image Used



ADDITIONAL GRADING INFORMATION

Polish EXCELLENT Symmetry EXCELLENT Fluorescence NONE Inscription(s) LG720575997

Comments: This Laboratory Grown Diamond was created by High Pressure High Temperature (HPHT) growth process. Indications of post-growth treatment.

ADDITIONAL GRADING INFORMATION

Polish EXCELLENT Symmetry EXCELLENT Fluorescence NONE Inscription(s) LG720575997 Comments: This Laboratory Grown Diamond was created by High Pressure High Temperature (HPHT) growth process. Indications of post-growth treatment.

COLOR

D E F G H I J Faint Very Light Light

CLARITY

IF WS 1-2 VS 1-2 SI 1-2 I 1-3 Internally Flawless Very Very Slightly Included Very Slightly Included Slightly Included Included



IGI



July 15, 2025 IGI Report No LG720575997 ROUND BRILLIANT 1.51 CARAT 7.41 - 7.45 X 4.44 MM FANCY INTENSE BLUE VS 1 IDEAL 59.8% 59% Medium (Faceted) Pointed EXCELLENT EXCELLENT NONE LG720575997 Comments: This Laboratory Grown Diamond was created by High Pressure High Temperature (HPHT) growth process. Indications of post-growth treatment.