



ELECTRONIC COPY

LG720571559
Report verification at igi.org



July 15, 2025
IGI Report Number **LG720571559**
Description **LABORATORY GROWN DIAMOND**
Shape and Cutting Style **ROUND BRILLIANT**
Measurements **9.35 - 9.44 X 5.52 MM**
GRADING RESULTS
Carat Weight **3.01 CARATS**
Color Grade **FANCY YELLOW**
Clarity Grade **VS 2**
Cut Grade **EXCELLENT**

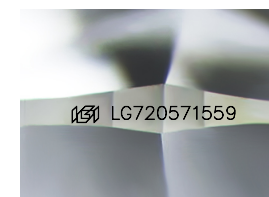
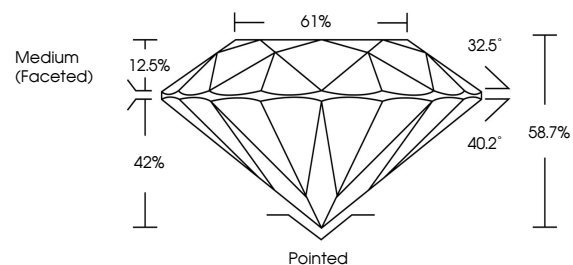
July 15, 2025
IGI Report Number **LG720571559**
Description **LABORATORY GROWN DIAMOND**
Shape and Cutting Style **ROUND BRILLIANT**
Measurements **9.35 - 9.44 X 5.52 MM**
GRADING RESULTS
Carat Weight **3.01 CARATS**
Color Grade **FANCY YELLOW**
Clarity Grade **VS 2**
Cut Grade **EXCELLENT**

ADDITIONAL GRADING INFORMATION

Polish **VERY GOOD**
Symmetry **EXCELLENT**
Fluorescence **NONE**
Inscription(s) **LG720571559**

Comments: This Laboratory Grown Diamond was created by Chemical Vapor Deposition (CVD) growth process.

PROPORTIONS



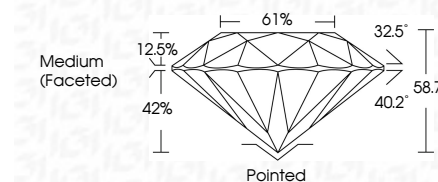
Sample Image Used

COLOR

D E F G H I J Faint Very Light Light

CLARITY

IF	WS ¹⁻²	VS ¹⁻²	SI ¹⁻²	I ¹⁻³
Internally Flawless	Very Very Slightly Included	Very Slightly Included	Slightly Included	Included



ADDITIONAL GRADING INFORMATION

Polish **VERY GOOD**
Symmetry **EXCELLENT**
Fluorescence **NONE**
Inscription(s) **LG720571559**
Comments: This Laboratory Grown Diamond was created by Chemical Vapor Deposition (CVD) growth process.



IGI



July 15, 2025
IGI Report No LG720571559
ROUND BRILLIANT
9.35 - 9.44 X 5.52 MM
3.01 CARATS
FANCY YELLOW
VS 2
EXCELLENT
58.7%
61%
Medium (Faceted)
Pointed
VERY GOOD
EXCELLENT
NONE
IGI LG720571559
Comments: This Laboratory Grown Diamond was created by Chemical Vapor Deposition (CVD) growth process.