

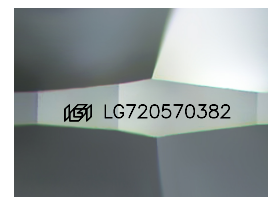
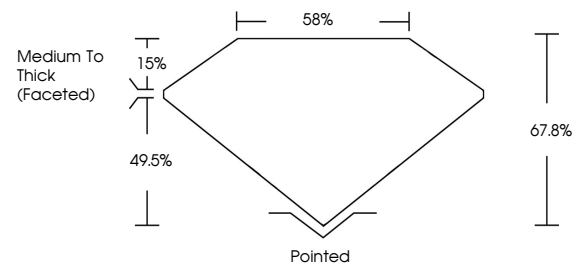


**ELECTRONIC COPY**

## LABORATORY GROWN DIAMOND REPORT

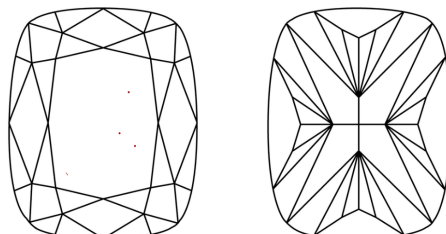
LG720570382  
Report verification at [igi.org](https://igi.org)

## PROPORTIONS



Sample Image Used

## CLARITY CHARACTERISTICS



## KEY TO SYMBOLS

Red symbols indicate internal characteristics.  
Green symbols indicate external characteristics.

## COLOR

D E F G H I J Faint Very Light Light

## CLARITY

IF      VWS<sup>1-2</sup>      VS<sup>1-2</sup>      SI<sup>1-2</sup>      I<sup>1-3</sup>

Internally Flawless	Very Very Slightly Included	Very Slightly Included	Slightly Included	Included
------------------------	--------------------------------	---------------------------	----------------------	----------



July 9, 2025

IGI Report Number **LG720570382**

Description	LABORATORY GROWN DIAMOND
-------------	--------------------------

Shape and Cutting Style **CUSHION MODIFIED  
BRILLIANT**

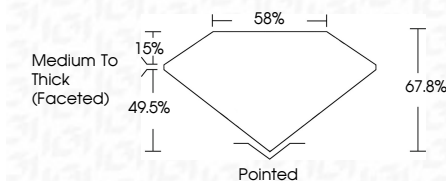
Measurements **12.91 X 9.37 X 6.35 MM**

## GRADING RESULTS

Carat Weight 6.14 CARATS

Color Grade

Clarity Grade VS 1



### ADDITIONAL GRADING INFORMATION

Polish **EXCELLENT**Symmetry **EXCELLENT**Fluorescence **NONE**Inscription(s)  LG720570382

Comments: This Laboratory Grown Diamond was created by Chemical Vapor Deposition (CVD) growth process.  
Type IIa



July 9, 2025	6.14 CARATS	VS 1	67.8%	58%	Pointed	EXCELLENT	EXCELLENT	NONE	#61 LG729570392
GI Report No. LG729570392	Color Weight	Clarity Grade	Depth	Table	Proportions	Symmetry	Fluorescence	Inclusions(s)	
CUSHION MODIFIED BRILLIANT	Color Grade				Medium to thick (faceted)				
12121 X 9.37 X 6.35 MM									

Comments:

The Laboratory Grown Diamond was  
 reported as having no detectable  
 (VD) report process.  
 type IIG



THIS DOCUMENT WAS PRODUCED WITH THE FOLLOWING SECURITY MEASURES: SPECIAL DOCUMENT PAPER, INK SCREENS, WATERMARK, BACKGROUND DESIGNS, HOLOGRAM AND OTHER SECURITY FEATURES NOT LISTED AND DO EXCEED DOCUMENT SECURITY INDUSTRY GUIDELINE