

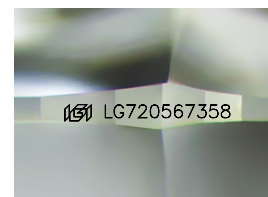
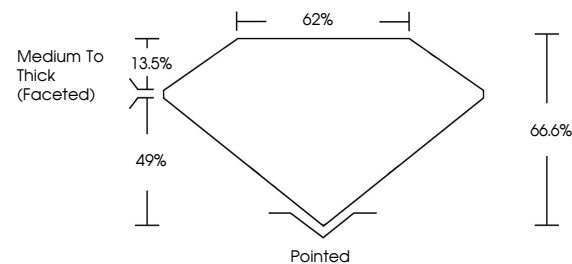


ELECTRONIC COPY

LABORATORY GROWN DIAMOND REPORT

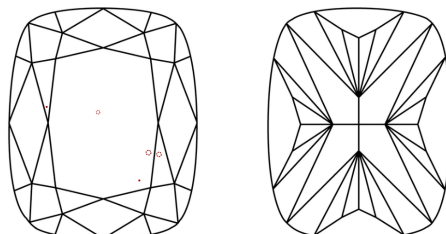
LG720567358
Report verification at igi.org

PROPORTIONS



Sample Image Used

CLARITY CHARACTERISTICS



KEY TO SYMBOLS

Red symbols indicate internal characteristics.
Green symbols indicate external characteristics.

COLOR

D E F G H I J Faint Very Light Light

CLARITY

IF	VS ¹⁻²	VS ¹⁻²	SI ¹⁻²	I ¹⁻³
Internally Flawless	Very Very Slightly Included	Very Slightly Included	Slightly Included	Included

LABORATORY GROWN DIAMOND REPORT



July 8, 2025

IGI Report Number **LG720567358**Description **LABORATORY GROWN DIAMOND**

Shape and Cutting Style **CUSHION MODIFIED
BRILLIANT**

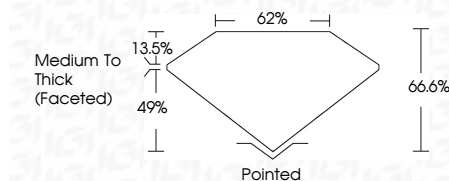
Measurements	11.09 X 8.02 X 5.34 MM
--------------	------------------------

GRADING RESULTS

Carat Weight **3.83 CARATS**

Color Grade F

Clarity Grade VS 1



ADDITIONAL GRADING INFORMATION

Polish **EXCELLENT**Symmetry **EXCELLENT**Fluorescence **NONE**Inscription(s) LG720567358

Comments: This Laboratory Grown Diamond was created by Chemical Vapor Deposition (CVD) growth process.
Type IIa



www.igi.org

© IGI 2020, International Gemological Institute

FD - 10 20



THIS DOCUMENT WAS PRODUCED WITH THE FOLLOWING SECURITY MEASURES: SPECIAL DOCUMENT PAPER, INK SCREENS, WATERMARK, BACKGROUND DESIGNS, HOLOGRAM AND OTHER SECURITY FEATURES NOT LISTED AND DO EXCEED DOCUMENT SECURITY INDUSTRY GUIDELINES

July 4, 2025	3.83 CARATS	F	VS 1	Medium to Thick (faceted)	Pointed	NONE	1681 6772557358	Comments: The Laboratory Grown Diamond was created using High Pressure High Temperature (HPHT) growth process. Type IIa
GI SURETONE LG72057358	11.09 X 8.02 X 5.34 MM		66.6%		Excellent	Excellent		
CUSHION MODIFIED BRILLIANT			62%					
	Color Grade	Clarity Grade	Depth	Table	Proportions	Symmetry	Fluorescence	Inscriptions(s)
					Quiet	Polish		