



ELECTRONIC COPY

LG720561493
Report verification at igi.org



July 5, 2025

IGI Report Number **LG720561493**

Description **LABORATORY GROWN DIAMOND**

Shape and Cutting Style **EMERALD CUT**

Measurements **7.47 X 5.17 X 3.50 MM**

GRADING RESULTS

Carat Weight **1.34 CARAT**

Color Grade **F**

Clarity Grade **VVS 2**

LABORATORY GROWN DIAMOND REPORT

July 5, 2025

IGI Report Number **LG720561493**

Description **LABORATORY GROWN DIAMOND**

Shape and Cutting Style **EMERALD CUT**

Measurements **7.47 X 5.17 X 3.50 MM**

GRADING RESULTS

Carat Weight **1.34 CARAT**

Color Grade **F**

Clarity Grade **VVS 2**

ADDITIONAL GRADING INFORMATION

Polish **EXCELLENT**

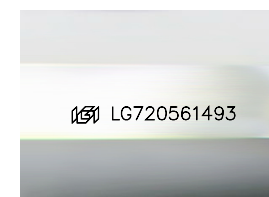
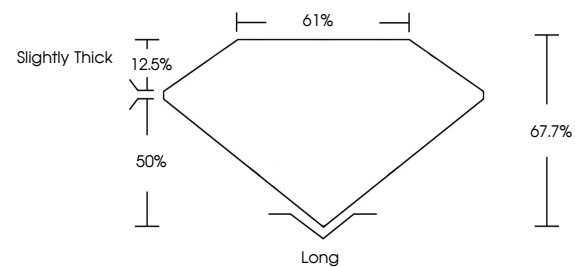
Symmetry **EXCELLENT**

Fluorescence **NONE**

Inscription(s) **IGI LG720561493**

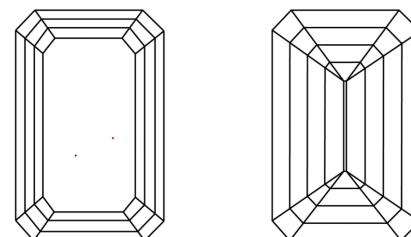
Comments: This Laboratory Grown Diamond was created by Chemical Vapor Deposition (CVD) growth process.
Type IIa

PROPORTIONS



Sample Image Used

CLARITY CHARACTERISTICS



KEY TO SYMBOLS

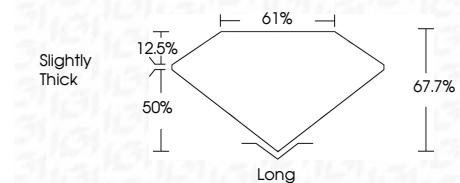
Red symbols indicate internal characteristics.
Green symbols indicate external characteristics.

COLOR

D E F G H I J Faint Very Light Light

CLARITY

| IF | VS ¹⁻² | VS ¹⁻² | SI ¹⁻² | I ¹⁻³ |
|---------------------|-----------------------------|------------------------|-------------------|------------------|
| Internally Flawless | Very Very Slightly Included | Very Slightly Included | Slightly Included | Included |



ADDITIONAL GRADING INFORMATION

Polish **EXCELLENT**

Symmetry **EXCELLENT**

Fluorescence **NONE**

Inscription(s) **IGI LG720561493**

Comments: This Laboratory Grown Diamond was created by Chemical Vapor Deposition (CVD) growth process.
Type IIa



| | | | | | | | | | | | | |
|--------------|---------------------------|-------------|---------------|-------|-------|--------|----------------|--------|-----------|--------------|----------------|--|
| July 5, 2025 | IGI Report No LG720561493 | 1.34 CARAT | F | VVS 2 | 67.7% | 61% | Slightly Thick | Long | EXCELLENT | EXCELLENT | NONE | IGI LG720561493 |
| EMERALD CUT | 7.47 X 5.17 X 3.50 MM | Color Grade | Clarity Grade | Depth | Table | Graile | Culet | Polish | Symmetry | Fluorescence | Inscription(s) | Comments: This Laboratory Grown Diamond was created by Chemical Vapor Deposition (CVD) growth process. Type IIa |

