

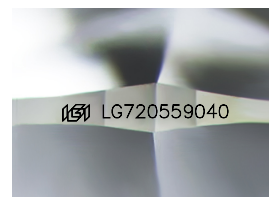
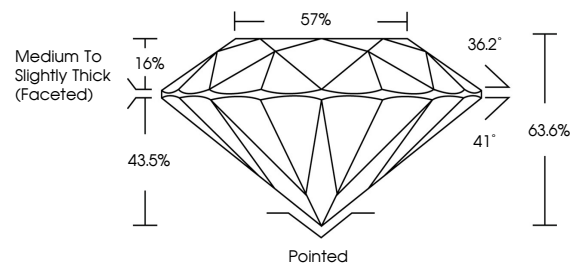


ELECTRONIC COPY

LABORATORY GROWN DIAMOND REPORT

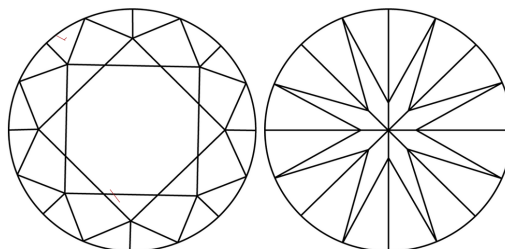
LG720559040
Report verification at igi.org

PROPORTIONS



Sample Image Used

CLARITY CHARACTERISTICS



KEY TO SYMBOLS

Red symbols indicate internal characteristics.
Green symbols indicate external characteristics.

COLOR

D E F G H I J Faint Very Light Light

CLARITY

IF WS¹⁻² VS¹⁻² SI¹⁻² |¹⁻³

Internally Flawless	Very Very Slightly Included	Very Slightly Included	Slightly Included	Included
------------------------	--------------------------------	---------------------------	----------------------	----------



© IGI 2020, International Gemological Institute

FD - 10 20

www.igi.org

LABORATORY GROWN DIAMOND REPORT



July 7, 2025

IGI Report Number **LG720559040**

Description **LABORATORY GROWN DIAMOND**Shape and Cutting Style **ROUND BRILLIANT**

Measurements	6.60 - 6.63 X 4.21 MM
--------------	-----------------------

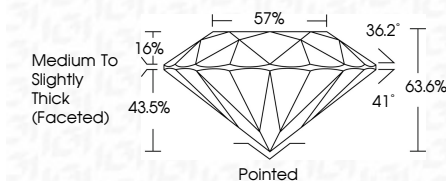
GRADING RESULTS

Carat Weight **1.16 CARAT**

Color Grade	D
-------------	---

Clarity Grade VS 1

Cut Grade **EXCELLENT**



ADDITIONAL GRADING INFORMATION

Polish **EXCELLENT**Symmetry **EXCELLENT**Fluorescence **NONE**Inscription(s) LG720559040

Comments: As Grown - No indication of post-growth treatment.

This Laboratory Grown Diamond was created by High Pressure High Temperature (HPHT) growth process.



	1.16 CARAT D Vs1 EXCELLENT 68.6% 57% Medium to Slightly Thick (faceted)	Polished EXCELLENT EXCELLENT NONE gsl1672059040
ROUND BRILLIANT 6.60 - 6.68 X 4.21 MM Color Weight Carat Grade Clarity Grade Cut Grade Depth Table Girdle Culet Polish Symmetry Fluorescence Comments:	No Indication of post-growth treatment. This Laboratory Growth Diamond was created by High Pressure High Temperature (HPHT) growth process. Type IIa	