



ELECTRONIC COPY

LG720557216
Report verification at igi.org



July 12, 2025
IGI Report Number **LG720557216**
Description **LABORATORY GROWN DIAMOND**
Shape and Cutting Style **ROUND BRILLIANT**
Measurements **8.11 - 8.14 X 4.88 MM**
GRADING RESULTS
Carat Weight **1.98 CARAT**
Color Grade **FANCY INTENSE PINK**
Clarity Grade **VS 1**
Cut Grade **EXCELLENT**

July 12, 2025
IGI Report Number **LG720557216**
Description **LABORATORY GROWN DIAMOND**
Shape and Cutting Style **ROUND BRILLIANT**
Measurements **8.11 - 8.14 X 4.88 MM**

GRADING RESULTS

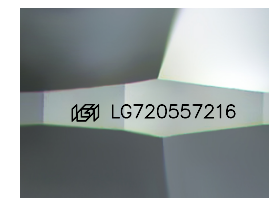
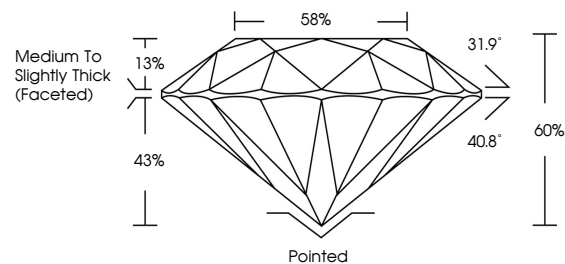
Carat Weight **1.98 CARAT**
Color Grade **FANCY INTENSE PINK**
Clarity Grade **VS 1**
Cut Grade **EXCELLENT**

ADDITIONAL GRADING INFORMATION

Polish **EXCELLENT**
Symmetry **EXCELLENT**
Fluorescence **SLIGHT**
Inscription(s) **IGI LG720557216**

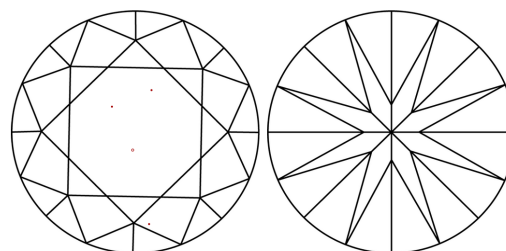
Comments: This Laboratory Grown Diamond was created by Chemical Vapor Deposition (CVD) growth process.
Indications of post-growth treatment.

PROPORTIONS



Sample Image Used

CLARITY CHARACTERISTICS



KEY TO SYMBOLS

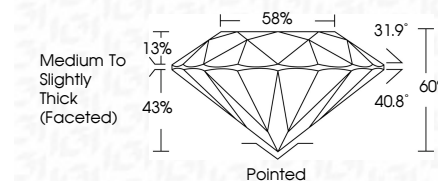
Red symbols indicate internal characteristics.
Green symbols indicate external characteristics.

COLOR

D E F G H I J Faint Very Light Light

CLARITY

IF	VS ¹⁻²	VS ¹⁻²	SI ¹⁻²	I ¹⁻³
Internally Flawless	Very Very Slightly Included	Very Slightly Included	Slightly Included	Included



ADDITIONAL GRADING INFORMATION

Polish **EXCELLENT**
Symmetry **EXCELLENT**
Fluorescence **SLIGHT**
Inscription(s) **IGI LG720557216**
Comments: This Laboratory Grown Diamond was created by Chemical Vapor Deposition (CVD) growth process.
Indications of post-growth treatment.



July 12, 2025
IGI Report No LG720557216
ROUND BRILLIANT
8.11 - 8.14 X 4.88 MM
Carat Weight **1.98 CARAT**
Color Grade **FANCY INTENSE PINK**
Clarity Grade **VS 1**
Cut Grade **EXCELLENT**
Depth **60%**
Table **58%**
Girdle **Medium To Slightly Thick (Faceted)**
Culet **Pointed**
Polish **EXCELLENT**
Symmetry **EXCELLENT**
Fluorescence **SLIGHT**
Inscription(s) **IGI LG720557216**
Comments: This Laboratory Grown Diamond was created by Chemical Vapor Deposition (CVD) growth process.
Indications of post-growth treatment.