



ELECTRONIC COPY

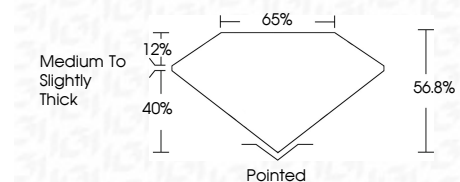
LG720555196
Report verification at igi.org



July 8, 2025
IGI Report Number LG720555196
Description LABORATORY GROWN DIAMOND
Shape and Cutting Style TRIANGULAR BRILLIANT
Measurements 6.99 X 6.71 X 3.81 MM

GRADING RESULTS

Carat Weight 1.04 CARAT
Color Grade D
Clarity Grade VS 1

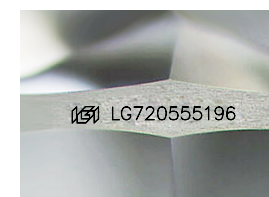


ADDITIONAL GRADING INFORMATION

Polish VERY GOOD
Symmetry EXCELLENT
Fluorescence NONE
Inscription(s) IGI LG720555196
Comments: This Laboratory Grown Diamond was created by Chemical Vapor Deposition (CVD) growth process. Type IIa

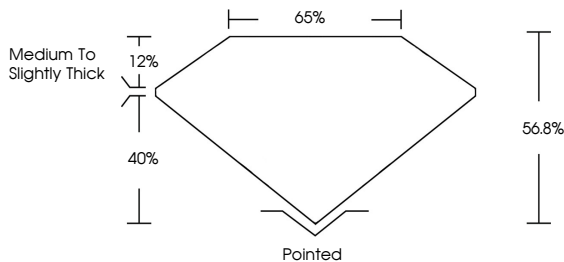


July 8, 2025
IGI Report No LG720555196
LABORATORY GROWN DIAMOND
6.99 X 6.71 X 3.81 MM
1.04 CARAT
D
VS 1
66.8%
65%
Medium to Slightly Thick
Pointed
VERY GOOD
EXCELLENT
NONE
IGI LG720555196
Comments: This Laboratory Grown Diamond was created by Chemical Vapor Deposition (CVD) growth process. Type IIa

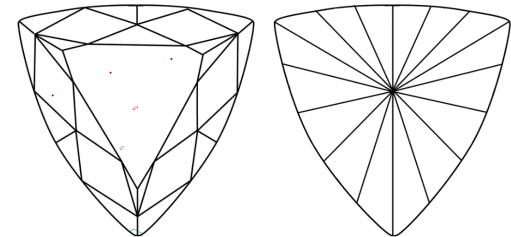


Sample Image Used

PROPORTIONS



CLARITY CHARACTERISTICS



KEY TO SYMBOLS

Red symbols indicate internal characteristics.
Green symbols indicate external characteristics.

COLOR

Color scale table with categories D, E, F, G, H, I, J, Faint, Very Light, Light

CLARITY

Clarity scale table with categories IF, VS 1-2, VS 1-2, SI 1-2, I 1-3, Internally Flawless, Very Very Slightly Included, Very Slightly Included, Slightly Included, Included

