



**ELECTRONIC COPY**

LG720553126  
Report verification at igi.org



July 11, 2025

IGI Report Number **LG720553126**

Description **LABORATORY GROWN DIAMOND**

Shape and Cutting Style **EMERALD CUT**

Measurements **11.03 X 7.36 X 4.95 MM**

**GRADING RESULTS**

Carat Weight **4.00 CARATS**

Color Grade **FANCY INTENSE BLUE**

Clarity Grade **VVS 2**

**LABORATORY GROWN DIAMOND REPORT**

July 11, 2025

IGI Report Number **LG720553126**

Description **LABORATORY GROWN DIAMOND**

Shape and Cutting Style **EMERALD CUT**

Measurements **11.03 X 7.36 X 4.95 MM**

**GRADING RESULTS**

Carat Weight **4.00 CARATS**

Color Grade **FANCY INTENSE BLUE**

Clarity Grade **VVS 2**

**ADDITIONAL GRADING INFORMATION**

Polish **EXCELLENT**

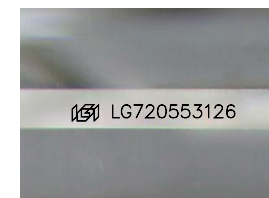
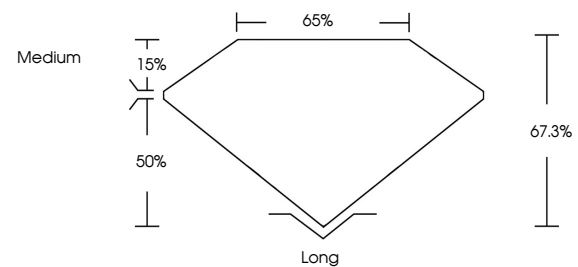
Symmetry **EXCELLENT**

Fluorescence **NONE**

Inscription(s) **IGI LG720553126**

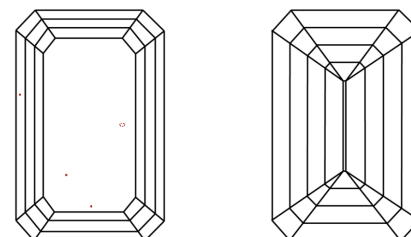
Comments: This Laboratory Grown Diamond was created by Chemical Vapor Deposition (CVD) growth process. Indications of post-growth treatment.

**PROPORTIONS**



Sample Image Used

**CLARITY CHARACTERISTICS**



**KEY TO SYMBOLS**

Red symbols indicate internal characteristics.  
Green symbols indicate external characteristics.

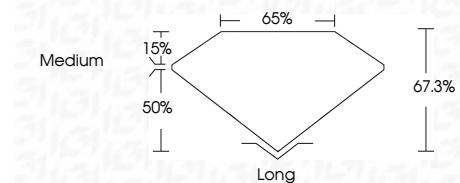
**COLOR**

D E F G H I J Faint Very Light Light

**CLARITY**

IF VS<sup>1-2</sup> VS<sup>1-2</sup> SI<sup>1-2</sup> I<sup>1-3</sup>

Internally Flawless Very Very Slightly Included Very Slightly Included Slightly Included Included



**ADDITIONAL GRADING INFORMATION**

Polish **EXCELLENT**

Symmetry **EXCELLENT**

Fluorescence **NONE**

Inscription(s) **IGI LG720553126**

Comments: This Laboratory Grown Diamond was created by Chemical Vapor Deposition (CVD) growth process. Indications of post-growth treatment.



July 11, 2025	4.00 CARATS	Long
IGI Report No LG720553126	FANCY INTENSE BLUE	EXCELLENT
EMERALD CUT	VVS 2	EXCELLENT
11.03 X 7.36 X 4.95 MM	67.3%	NONE
Carat Weight	Medium	Inscription(s)
Color Grade	Medium	IGI LG720553126
Clarity Grade	None	
Depth		
Table		
Girdle		
Culet		
Polish		
Symmetry		
Fluorescence		
Inscription(s)		

Comments: This Laboratory Grown Diamond was created by Chemical Vapor Deposition (CVD) growth process. Indications of post-growth treatment.