



ELECTRONIC COPY

LG720551909
Report verification at igi.org



November 24, 2025

IGI Report Number **LG720551909**

Description **LABORATORY GROWN DIAMOND**

Shape and Cutting Style **ROUND MODIFIED BRILLIANT
145 FACETS**

Measurements **8.07 - 8.13 X 5.02 MM**

GRADING RESULTS

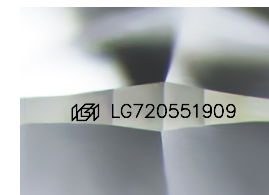
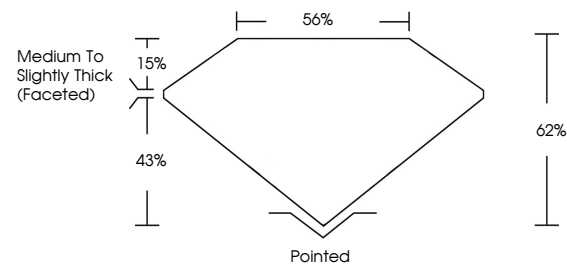
Carat Weight **2.05 CARATS**

Color Grade **E**

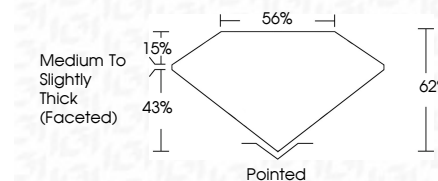
Clarity Grade **VVS 2**

Cut Grade **EXCELLENT**

PROPORTIONS



Sample Image Used



ADDITIONAL GRADING INFORMATION

Polish **VERY GOOD**

Symmetry **VERY GOOD**

Fluorescence **NONE**

Inscription(s) **IGI LG720551909**

Comments: This Laboratory Grown Diamond was created by Chemical Vapor Deposition (CVD) growth process. Type IIa



COLOR

D E F G H I J Faint Very Light Light

CLARITY

FL IF VVS¹⁻² VS¹⁻² SI¹⁻² I¹⁻³

Flawless Internally Flawless Very Very Slightly Included Very Slightly Included Slightly Included Included

November 24, 2025
IGI Report No LG720551909
ROUND MODIFIED BRILLIANT 145 FACETS
8.07 - 8.13 X 5.02 MM
2.05 CARATS
E
VVS 2
EXCELLENT
62%
56%
Medium To Slightly Thick (Faceted)
Pointed
VERY GOOD
VERY GOOD
VERY GOOD
NONE
IGI LG720551909
Comments: This Laboratory Grown Diamond was created by Chemical Vapor Deposition (CVD) growth process. Type IIa