



ELECTRONIC COPY

LG720551908
Report verification at igi.org



November 24, 2025

IGI Report Number **LG720551908**

Description **LABORATORY GROWN DIAMOND**

Shape and Cutting Style **ROUND MODIFIED BRILLIANT
145 FACETS**

Measurements **8.14 - 8.23 X 4.97 MM**

GRADING RESULTS

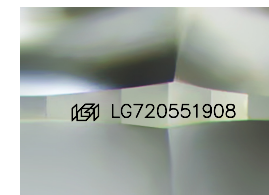
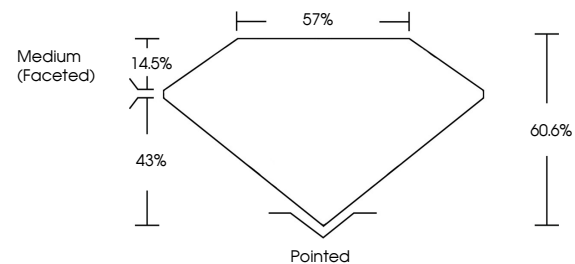
Carat Weight **2.04 CARATS**

Color Grade **F**

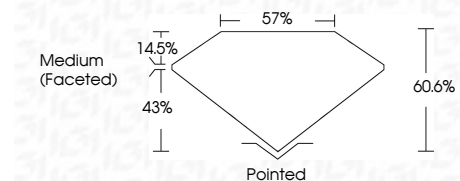
Clarity Grade **VVS 2**

Cut Grade **EXCELLENT**

PROPORTIONS



Sample Image Used



ADDITIONAL GRADING INFORMATION

Polish **VERY GOOD**

Symmetry **EXCELLENT**

Fluorescence **NONE**

Inscription(s) **IGI LG720551908**

Comments: This Laboratory Grown Diamond was created by Chemical Vapor Deposition (CVD) growth process. Type IIa



COLOR

D E F G H I J Faint Very Light Light

CLARITY

FL IF VVS¹⁻² VS¹⁻² SI¹⁻² I¹⁻³

Flawless Internally Flawless Very Very Slightly Included Very Slightly Included Slightly Included Included

November 24, 2025
IGI Report No LG720551908
ROUND MODIFIED BRILLIANT 145 FACETS
8.14 - 8.23 X 4.97 MM
Carat Weight **2.04 CARATS**
Color Grade **F**
Clarity Grade **VVS 2**
Cut Grade **EXCELLENT**
Depth **60.6%**
Table **57%**
Girdle **Medium (Faceted)**
Culet **Pointed**
Polish **VERY GOOD**
Symmetry **EXCELLENT**
Fluorescence **NONE**
Inscription(s) **IGI LG720551908**
Comments: This Laboratory Grown Diamond was created by Chemical Vapor Deposition (CVD) growth process. Type IIa

