



ELECTRONIC COPY

LG720549056 Report verification at igi.org



July 3, 2025 IGI Report Number LG720549056 Description LABORATORY GROWN DIAMOND Shape and Cutting Style ROUND BRILLIANT Measurements 6.99 - 7.04 X 4.33 MM GRADING RESULTS Carat Weight 1.32 CARAT Color Grade E Clarity Grade VVS 1 Cut Grade IDEAL

LABORATORY GROWN DIAMOND REPORT

July 3, 2025 IGI Report Number LG720549056 Description LABORATORY GROWN DIAMOND Shape and Cutting Style ROUND BRILLIANT Measurements 6.99 - 7.04 X 4.33 MM

GRADING RESULTS

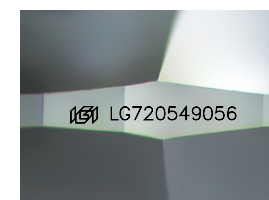
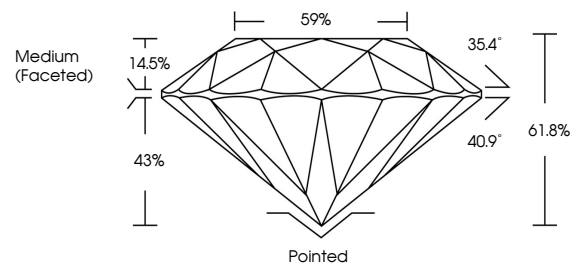
Carat Weight 1.32 CARAT Color Grade E Clarity Grade VVS 1 Cut Grade IDEAL

ADDITIONAL GRADING INFORMATION

Polish EXCELLENT Symmetry EXCELLENT Fluorescence NONE Inscription(s) IGI LG720549056

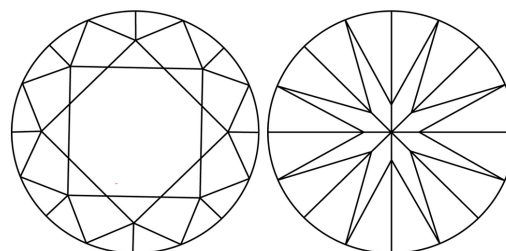
Comments: This Laboratory Grown Diamond was created by Chemical Vapor Deposition (CVD) growth process. Type IIa

PROPORTIONS



Sample Image Used

CLARITY CHARACTERISTICS



KEY TO SYMBOLS

Red symbols indicate internal characteristics. Green symbols indicate external characteristics.

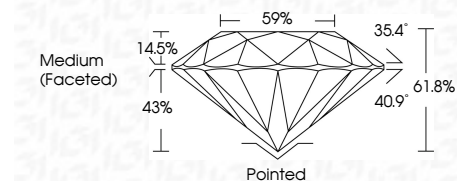
COLOR

D E F G H I J Faint Very Light Light

CLARITY

IF WS 1-2 VS 1-2 SI 1-2 I 1-3

Internally Flawless Very Very Slightly Included Very Slightly Included Slightly Included Included



ADDITIONAL GRADING INFORMATION

Polish EXCELLENT Symmetry EXCELLENT Fluorescence NONE Inscription(s) IGI LG720549056 Comments: This Laboratory Grown Diamond was created by Chemical Vapor Deposition (CVD) growth process. Type IIa



July 3, 2025 IGI Report No LG720549056 ROUND BRILLIANT 6.99 - 7.04 X 4.33 MM 1.32 CARAT E VVS 1 IDEAL 61.8% 59% Medium (Faceted) Pointed EXCELLENT EXCELLENT NONE IGI LG720549056 Comments: This Laboratory Grown Diamond was created by Chemical Vapor Deposition (CVD) growth process. Type IIa