



**ELECTRONIC COPY**

## LABORATORY GROWN DIAMOND REPORT

|                         |                          |
|-------------------------|--------------------------|
| December 9, 2025        |                          |
| IGI Report Number       | LG720547538              |
| Description             | LABORATORY GROWN DIAMOND |
| Shape and Cutting Style | ROUND BRILLIANT          |
| Measurements            | 6.66 - 6.72 X 4.16 MM    |

## GRADING RESULTS

|               |            |
|---------------|------------|
| Carat Weight  | 1.15 CARAT |
| Color Grade   | F          |
| Clarity Grade | VS 1       |
| Cut Grade     | EXCELLENT  |

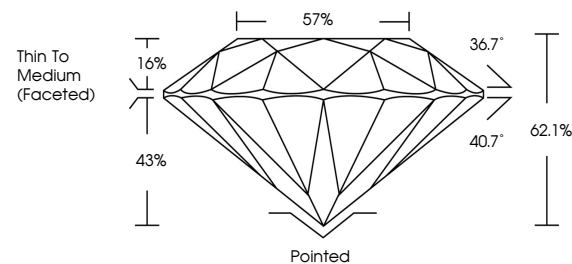
### ADDITIONAL GRADING INFORMATION

|                |   |
|----------------|---|
| Polish         | EXCELLENT   |
| Symmetry       | EXCELLENT   |
| Fluorescence   | NONE  |
| Inscription(s) |  LG720547538 |

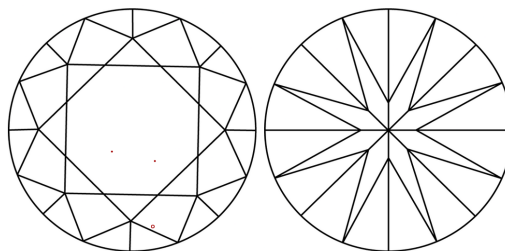
Comments: This Laboratory Grown Diamond was created by Chemical Vapor Deposition (CVD) growth process.  
Type IIa

LG720547538  
Report verification at [igi.org](https://igi.org)

## PROPORTIONS

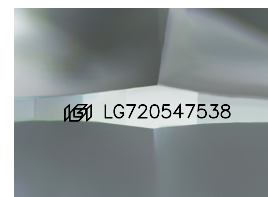


## CLARITY CHARACTERISTICS



## KEY TO SYMBOLS

Red symbols indicate internal characteristics.  
Green symbols indicate external characteristics.



Sample Image Used

**COLOR**

D E F G H I J Faint Very Light Light

## CLARITY

FL IF VWS<sup>1-2</sup> VS<sup>1-2</sup> SI<sup>1-2</sup> |<sup>1-3</sup>

|          |                     |                             |                        |                   |          |
|----------|---------------------|-----------------------------|------------------------|-------------------|----------|
| Flawless | Internally Flawless | Very Very Slightly Included | Very Slightly Included | Slightly Included | Included |
|----------|---------------------|-----------------------------|------------------------|-------------------|----------|

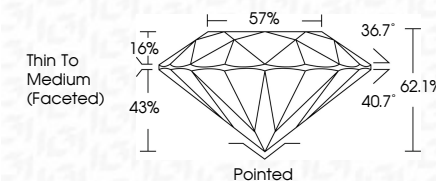
## LABORATORY GROWN DIAMOND REPORT



|                         |                          |
|-------------------------|--------------------------|
| December 9, 2025        |                          |
| IGI Report Number       | LG720547538              |
| Description             | LABORATORY GROWN DIAMOND |
| Shape and Cutting Style | ROUND BRILLIANT          |
| Measurements            | 6.66 - 6.72 X 4.16 MM    |

## GRADING RESULTS

|               |            |
|---------------|------------|
| Carat Weight  | 1.15 CARAT |
| Color Grade   | F          |
| Clarity Grade | VS 1       |
| Cut Grade     | EXCELLENT  |



### ADDITIONAL GRADING INFORMATION

|   |   |
|---|---|
| Polish  | EXCELLENT   |
| Symmetry  | EXCELLENT   |
| Fluorescence  | NONE  |
| Inscription(s)  |  LG720547538 |
| <p>Comments: This Laboratory Grown Diamond was created by Chemical Vapor Deposition (CVD) growth process.</p> <p>Type IIa</p> |   |



© IGI 2020, International Gemological Institute

FD - 10 20



THIS DOCUMENT WAS PRODUCED WITH THE FOLLOWING SECURITY MEASURES: SPECIAL DOCUMENT PAPER, INK SCREENS, WATERMARK, BACKGROUND DESIGNS, HOLOGRAM AND OTHER SECURITY FEATURES NOT LISTED AND DO EXCEED DOCUMENT SECURITY INDUSTRY GUIDELINES

**www.igi.org**

December 9, 2025  
 IGI Report No LG7201  
 FINDING BRILLIANT

|                 |   |   |
|-----------------|---|---|
| 1.15 CARAT<br>F | VS 1<br>EXCELLENT<br>62.1%<br>57%<br>Thin to Medium<br>(face-fleed) | Pointed<br>EXCELLENT<br>EXCELLENT<br>NONE |
| Color Grade     | Clarity Grade   | Culet                                     |
| Depth           | Cut Grade   | Polish                                    |
| Table           | Table   | Symmetry                                  |
| Girdle          | Girdle  | Fluorescence                              |

**Comments:**  
This Laboratory Grown Diamond was  
created by Chemical Vapor Deposition  
(CVD) growth process.