



ELECTRONIC COPY

LG720547379
Report verification at igi.org



January 10, 2026
IGI Report Number **LG720547379**
Description **LABORATORY GROWN DIAMOND**
Shape and Cutting Style **PEAR BRILLIANT**
Measurements **10.76 X 7.13 X 4.40 MM**
GRADING RESULTS
Carat Weight **2.00 CARATS**
Color Grade **FANCY BROWN**
Clarity Grade **VVS 2**

January 10, 2026
IGI Report Number **LG720547379**
Description **LABORATORY GROWN DIAMOND**
Shape and Cutting Style **PEAR BRILLIANT**
Measurements **10.76 X 7.13 X 4.40 MM**

GRADING RESULTS

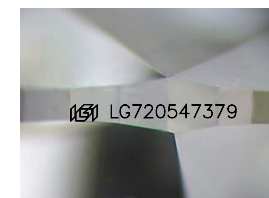
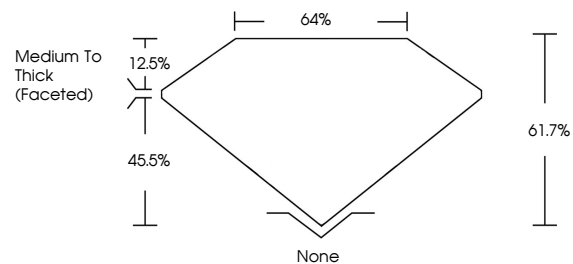
Carat Weight **2.00 CARATS**
Color Grade **FANCY BROWN**
Clarity Grade **VVS 2**

ADDITIONAL GRADING INFORMATION

Polish **GOOD**
Symmetry **EXCELLENT**
Fluorescence **VERY SLIGHT**
Inscription(s) **IGI LG720547379**

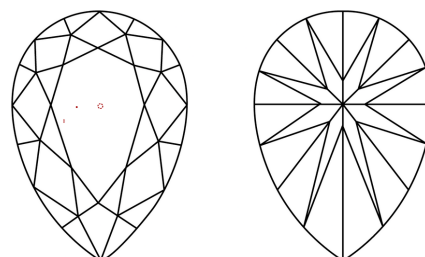
Comments: This Laboratory Grown Diamond was created by Chemical Vapor Deposition (CVD) growth process. Indications of post-growth treatment.

PROPORTIONS



Sample Image Used

CLARITY CHARACTERISTICS



KEY TO SYMBOLS

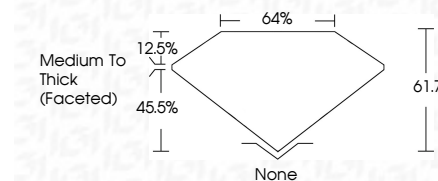
Red symbols indicate internal characteristics.
Green symbols indicate external characteristics.

COLOR

D E F G H I J Faint Very Light Light

CLARITY

FL	IF	VVS ¹⁻²	VS ¹⁻²	SI ¹⁻²	I ¹⁻³
Flawless	Internally Flawless	Very Very Slightly Included	Very Slightly Included	Slightly Included	Included



ADDITIONAL GRADING INFORMATION

Polish **GOOD**
Symmetry **EXCELLENT**
Fluorescence **VERY SLIGHT**
Inscription(s) **IGI LG720547379**
Comments: This Laboratory Grown Diamond was created by Chemical Vapor Deposition (CVD) growth process. Indications of post-growth treatment.



January 10, 2026
IGI Report No LG720547379
PEAR BRILLIANT
2.00 CARATS
FANCY BROWN
VVS 2
61.7%
45.5%
None
Medium To Thick (Faceted)
None
GOOD
EXCELLENT
VERY SLIGHT
IGI LG720547379
Comments: This Laboratory Grown Diamond was created by Chemical Vapor Deposition (CVD) growth process. Indications of post-growth treatment.