

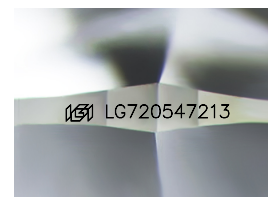
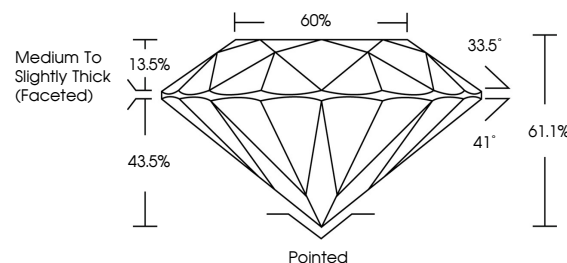


**ELECTRONIC COPY**

## LABORATORY GROWN DIAMOND REPORT

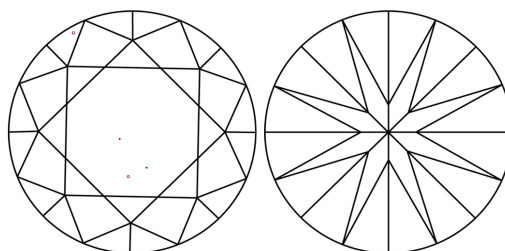
LG720547213  
Report verification at [igi.org](https://igi.org)

## PROPORTIONS



Sample Image Used

## CLARITY CHARACTERISTICS



## KEY TO SYMBOLS

Red symbols indicate internal characteristics.  
Green symbols indicate external characteristics.

## COLOR

D E F G H I J Faint Very Light Light

## CLARITY

FL	IF	VVS <sup>1-2</sup>	VS <sup>1-2</sup>	SI <sup>1-2</sup>	I <sup>1-3</sup>
Flawless	Internally Flawless	Very Very Slightly Included	Very Slightly Included	Slightly Included	Included

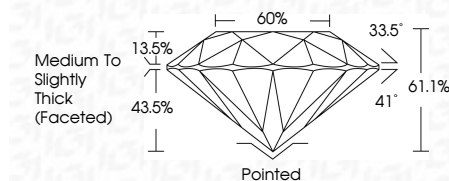
## LABORATORY GROWN DIAMOND REPORT



January 8, 2026	
IGI Report Number	LG720547213
Description	LABORATORY GROWN DIAMOND
Shape and Cutting Style	ROUND BRILLIANT
Measurements	6.75 - 6.81 X 4.14 MM

## GRADING RESULTS

Carat Weight	1.18 CARAT
Color Grade	F
Clarity Grade	VS 1
Cut Grade	EXCELLENT



### ADDITIONAL GRADING INFORMATION

Polish	EXCELLENT
Symmetry	EXCELLENT
Fluorescence	NONE
Inscription(s)	<del>LG</del> LG720547213
Comments: This Laboratory Grown Diamond was created by Chemical Vapor Deposition (CVD) growth process. Type IIa	



© IGI 2020, International Gemological Institute

FD - 10 20

**www.igi.org**



THIS DOCUMENT WAS PRODUCED WITH THE FOLLOWING SECURITY MEASURES: SPECIAL DOCUMENT PAPER, INK SCREENS, WATERMARK, BACKGROUND DESIGNS, HOLOGRAM AND OTHER SECURITY FEATURES NOT LISTED AND DO EXCEED DOCUMENT SECURITY INDUSTRY GUIDELINE

January 8, 2026  
GI Report No LG720547213  
ROUND BRILLIANT

Carat Weight	0.76 - 0.81 X 4.14 MM	1.18 CARAT F
Color Grade	Color Grade	VS 1
Clarity Grade	Clarity Grade	EXCELLENT
Cut Grade	Cut Grade	61.1%
Depth	Depth	60%
Table	Table	Medium to Slightly Thick (Faceted)
Grade	Grade	Pointed
Culet	Culet	EXCELLENT
Polish	Polish	EXCELLENT
Symmetry	Symmetry	EXCELLENT
Fluorescence	Fluorescence	NONE
Comments	Comments	see comments

**Comments:**  
This Laboratory Grown Diamond was  
created by Chemical Vapor Deposition  
(CVD) growth process.