



ELECTRONIC COPY

LG720546185
Report verification at igi.org



August 12, 2025

IGI Report Number **LG720546185**

Description **LABORATORY GROWN DIAMOND**

Shape and Cutting Style **PEAR MIXED CUT**

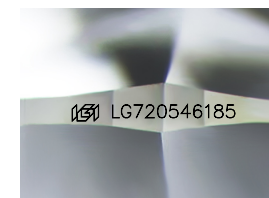
Measurements **11.58 X 7.58 X 3.02 MM**

GRADING RESULTS

Carat Weight **1.85 CARAT**

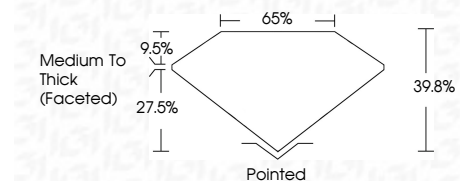
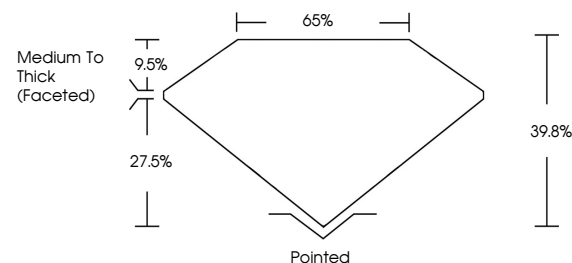
Color Grade **D**

Clarity Grade **VVS 1**

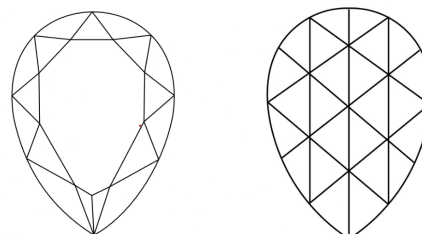


Sample Image Used

PROPORTIONS



CLARITY CHARACTERISTICS



KEY TO SYMBOLS

Red symbols indicate internal characteristics.
Green symbols indicate external characteristics.

COLOR

D E F G H I J Faint Very Light Light

CLARITY

IF WS¹⁻² VS¹⁻² SI¹⁻² I¹⁻³

Internally Flawless Very Very Slightly Included Very Slightly Included Slightly Included Included

ADDITIONAL GRADING INFORMATION

Polish **EXCELLENT**

Symmetry **EXCELLENT**

Fluorescence **NONE**

Inscription(s) **IGI LG720546185**

Comments: This Laboratory Grown Diamond was created by Chemical Vapor Deposition (CVD) growth process. Type IIa



IGI



August 12, 2025	IGI Report No LG720546185	1.85 CARAT	D
PEAR MIXED CUT	11.58 X 7.58 X 3.02 MM	VVS 1	99.0%
Color Grade	Depth	Table	65%
Clarity Grade	Grades	Medium To Thick (Faceted)	Pointed
Polish	Culet	EXCELLENT	EXCELLENT
Symmetry	Symmetry	EXCELLENT	EXCELLENT
Fluorescence	Fluorescence	NONE	NONE
Inscription(s)	Inscription(s)	IGI LG720546185	

Comments: This Laboratory Grown Diamond was created by Chemical Vapor Deposition (CVD) growth process. Type IIa