

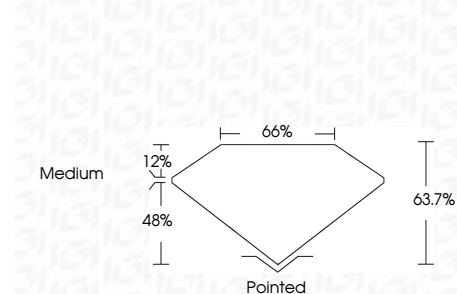


ELECTRONIC COPY

LG720546165 Report verification at igi.org



August 13, 2025 IGI Report Number LG720546165 Description LABORATORY GROWN DIAMOND Shape and Cutting Style CUT CORNERED RECTANGULAR MODIFIED BRILLIANT Measurements 9.22 X 6.33 X 4.03 MM



GRADING RESULTS Carat Weight 2.01 CARATS Color Grade E Clarity Grade VVS 2

ADDITIONAL GRADING INFORMATION Polish EXCELLENT Symmetry EXCELLENT Fluorescence NONE Inscription(s) LG720546165

Comments: This Laboratory Grown Diamond was created by Chemical Vapor Deposition (CVD) growth process. Type IIa



August 13, 2025 IGI Report No LG720546165 CUT CORNERED RECT. MODIFIED BRILLIANT 9.22 X 6.33 X 4.03 MM 2.01 CARATS E VVS 2 63.7% 65% Medium Pointed EXCELLENT EXCELLENT NONE LG720546165

Comments: This Laboratory Grown Diamond was created by Chemical Vapor Deposition (CVD) growth process. Type IIa

LABORATORY GROWN DIAMOND REPORT

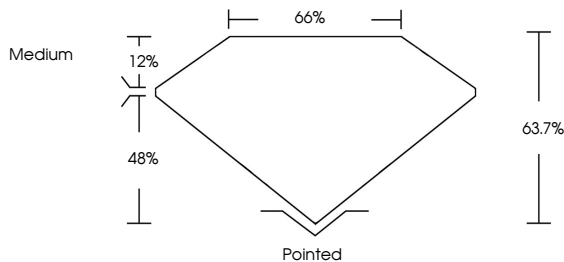
August 13, 2025 IGI Report Number LG720546165 Description LABORATORY GROWN DIAMOND Shape and Cutting Style CUT CORNERED RECTANGULAR MODIFIED BRILLIANT Measurements 9.22 X 6.33 X 4.03 MM

GRADING RESULTS Carat Weight 2.01 CARATS Color Grade E Clarity Grade VVS 2

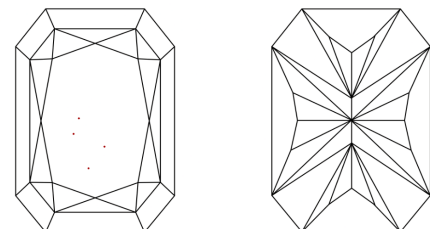
ADDITIONAL GRADING INFORMATION Polish EXCELLENT Symmetry EXCELLENT Fluorescence NONE Inscription(s) LG720546165

Comments: This Laboratory Grown Diamond was created by Chemical Vapor Deposition (CVD) growth process. Type IIa

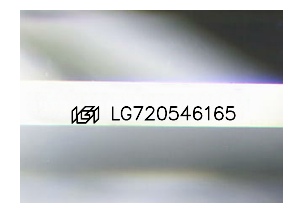
PROPORTIONS



CLARITY CHARACTERISTICS



KEY TO SYMBOLS Red symbols indicate internal characteristics. Green symbols indicate external characteristics.



Sample Image Used

COLOR

Table with color scale: D, E, F, G, H, I, J, Faint, Very Light, Light

CLARITY

Table with clarity scale: IF, VS 1-2, VVS 1-2, SI 1-2, I 1-3, Internally Flawless, Very Very Slightly Included, Very Slightly Included, Slightly Included, Included

