



ELECTRONIC COPY

LG720545992
Report verification at igi.org



December 1, 2025
IGI Report Number **LG720545992**
Description **LABORATORY GROWN DIAMOND**
Shape and Cutting Style **PEAR MODIFIED BRILLIANT**
Measurements **8.08 X 5.10 X 3.29 MM**
GRADING RESULTS
Carat Weight **1.01 CARAT**
Color Grade **FANCY LIGHT YELLOW**
Clarity Grade **VS 2**

December 1, 2025
IGI Report Number **LG720545992**
Description **LABORATORY GROWN DIAMOND**
Shape and Cutting Style **PEAR MODIFIED BRILLIANT**
Measurements **8.08 X 5.10 X 3.29 MM**

GRADING RESULTS

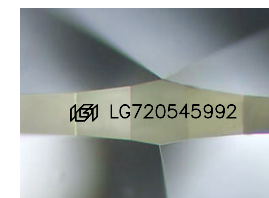
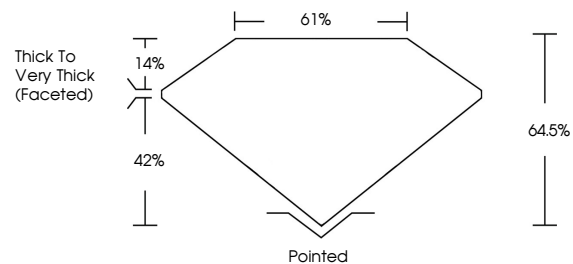
Carat Weight **1.01 CARAT**
Color Grade **FANCY LIGHT YELLOW**
Clarity Grade **VS 2**

ADDITIONAL GRADING INFORMATION

Polish **EXCELLENT**
Symmetry **EXCELLENT**
Fluorescence **NONE**
Inscription(s) **IGI LG720545992**

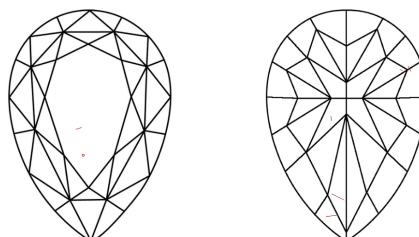
Comments: This Laboratory Grown Diamond was created by Chemical Vapor Deposition (CVD) growth process.

PROPORTIONS



Sample Image Used

CLARITY CHARACTERISTICS



KEY TO SYMBOLS

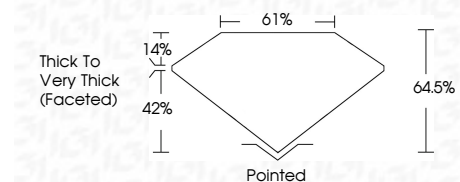
Red symbols indicate internal characteristics.
Green symbols indicate external characteristics.

COLOR

D E F G H I J Faint Very Light Light

CLARITY

FL	IF	VS ¹⁻²	VS ¹⁻²	SI ¹⁻²	I ¹⁻³
Flawless	Internally Flawless	Very Very Slightly Included	Very Slightly Included	Slightly Included	Included



ADDITIONAL GRADING INFORMATION

Polish **EXCELLENT**
Symmetry **EXCELLENT**
Fluorescence **NONE**
Inscription(s) **IGI LG720545992**
Comments: This Laboratory Grown Diamond was created by Chemical Vapor Deposition (CVD) growth process.



IGI



December 1, 2025
IGI Report No **LG720545992**
PEAR MODIFIED BRILLIANT
8.08 X 5.10 X 3.29 MM
Carat Weight **1.01 CARAT**
Color Grade **FANCY LIGHT YELLOW**
Clarity Grade **VS 2**
Depth **64.5%**
Table **61%**
Girdle **Thick to Very Thick (Faceted)**
Culet **Pointed**
Polish **EXCELLENT**
Symmetry **EXCELLENT**
Fluorescence **NONE**
Inscription(s) **IGI LG720545992**
Comments: This Laboratory Grown Diamond was created by Chemical Vapor Deposition (CVD) growth process.