



**ELECTRONIC COPY**

LG720545517  
Report verification at igi.org



August 4, 2025  
IGI Report Number **LG720545517**  
Description **LABORATORY GROWN DIAMOND**  
Shape and Cutting Style **FLOWER MODIFIED BRILLIANT**  
Measurements **5.73 X 5.72 X 3.91 MM**

**GRADING RESULTS**

Carat Weight **1.06 CARAT**  
Color Grade **E**  
Clarity Grade **VVS 1**

August 4, 2025  
IGI Report Number **LG720545517**  
Description **LABORATORY GROWN DIAMOND**  
Shape and Cutting Style **FLOWER MODIFIED BRILLIANT**  
Measurements **5.73 X 5.72 X 3.91 MM**

**GRADING RESULTS**

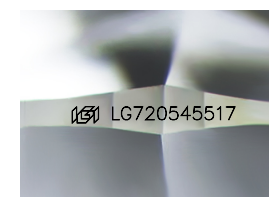
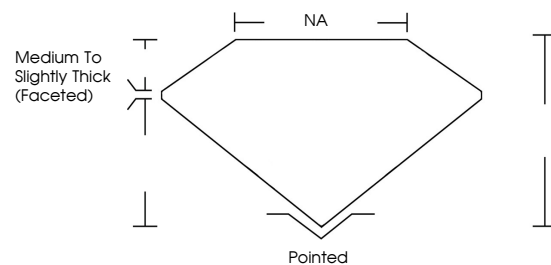
Carat Weight **1.06 CARAT**  
Color Grade **E**  
Clarity Grade **VVS 1**

**ADDITIONAL GRADING INFORMATION**

Polish **EXCELLENT**  
Symmetry **EXCELLENT**  
Fluorescence **NONE**  
Inscription(s) **IGI LG720545517**

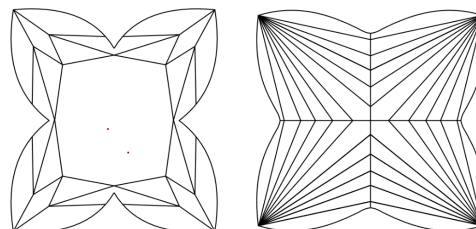
Comments: This Laboratory Grown Diamond was created by Chemical Vapor Deposition (CVD) growth process. Type IIa

**PROPORTIONS**



Sample Image Used

**CLARITY CHARACTERISTICS**



**KEY TO SYMBOLS**

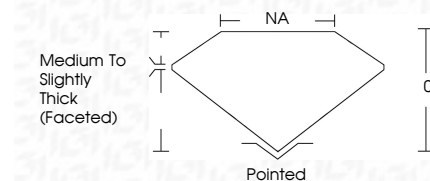
Red symbols indicate internal characteristics.  
Green symbols indicate external characteristics.

**COLOR**

D E F G H I J Faint Very Light Light

**CLARITY**

IF	VS <sup>1-2</sup>	VS <sup>1-2</sup>	SI <sup>1-2</sup>	I <sup>1-3</sup>
Internally Flawless	Very Very Slightly Included	Very Slightly Included	Slightly Included	Included



**ADDITIONAL GRADING INFORMATION**

Polish **EXCELLENT**  
Symmetry **EXCELLENT**  
Fluorescence **NONE**  
Inscription(s) **IGI LG720545517**  
Comments: This Laboratory Grown Diamond was created by Chemical Vapor Deposition (CVD) growth process. Type IIa



August 4, 2025  
IGI Report No **LG720545517**  
**FLOWER MODIFIED BRILLIANT**  
5.73 X 5.72 X 3.91 MM  
Carat Weight **1.06 CARAT**  
Color Grade **E**  
Clarity Grade **VVS 1**  
Table **0%**  
Girdle **NA**  
Medium to Slightly Thick (Faceted)  
Culet **Pointed**  
Polish **EXCELLENT**  
Symmetry **EXCELLENT**  
Fluorescence **NONE**  
Inscription(s) **IGI LG720545517**  
Comments: This Laboratory Grown Diamond was created by Chemical Vapor Deposition (CVD) growth process. Type IIa