



ELECTRONIC COPY

LG720544551
Report verification at igi.org



August 2, 2025

IGI Report Number **LG720544551**

Description **LABORATORY GROWN DIAMOND**

Shape and Cutting Style **ROUND BRILLIANT**

Measurements **6.55 - 6.57 X 4.07 MM**

GRADING RESULTS

Carat Weight **1.08 CARAT**

Color Grade **FANCY VIVID BLUE**

Clarity Grade **VS 1**

Cut Grade **IDEAL**

August 2, 2025

IGI Report Number **LG720544551**

Description **LABORATORY GROWN DIAMOND**

Shape and Cutting Style **ROUND BRILLIANT**

Measurements **6.55 - 6.57 X 4.07 MM**

GRADING RESULTS

Carat Weight **1.08 CARAT**

Color Grade **FANCY VIVID BLUE**

Clarity Grade **VS 1**

Cut Grade **IDEAL**

ADDITIONAL GRADING INFORMATION

Polish **EXCELLENT**

Symmetry **EXCELLENT**

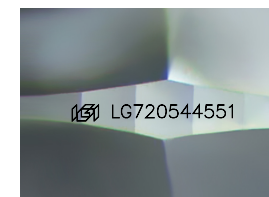
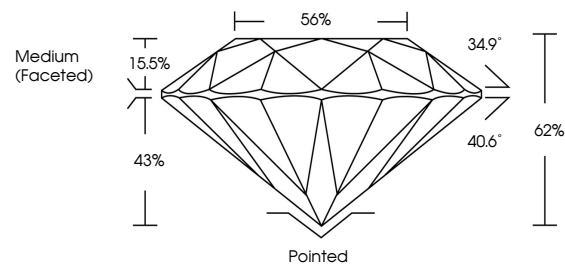
Fluorescence **VERY SLIGHT**

Inscription(s) **IGI LG720544551**

Comments: This Laboratory Grown Diamond was created by Chemical Vapor Deposition (CVD) growth process.

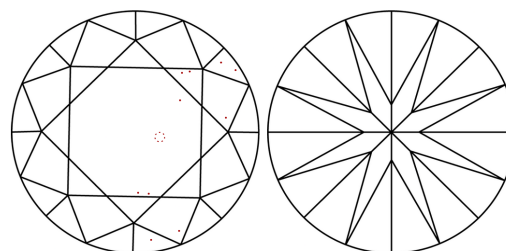
Indications of post-growth treatment.

PROPORTIONS



Sample Image Used

CLARITY CHARACTERISTICS



KEY TO SYMBOLS

Red symbols indicate internal characteristics.
Green symbols indicate external characteristics.

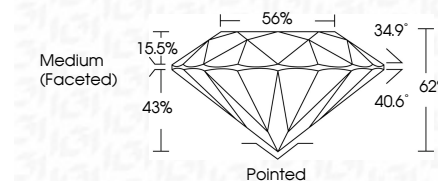
COLOR

D E F G H I J Faint Very Light Light

CLARITY

IF VS¹⁻² VS¹⁻² SI¹⁻² I¹⁻³

Internally Flawless Very Very Slightly Included Very Slightly Included Slightly Included Included



ADDITIONAL GRADING INFORMATION

Polish **EXCELLENT**

Symmetry **EXCELLENT**

Fluorescence **VERY SLIGHT**

Inscription(s) **IGI LG720544551**

Comments: This Laboratory Grown Diamond was created by Chemical Vapor Deposition (CVD) growth process. Indications of post-growth treatment.



IGI



August 2, 2025
IGI Report No LG720544551
ROUND BRILLIANT

6.55 - 6.57 X 4.07 MM
1.08 CARAT
FANCY VIVID BLUE
VS 1
IDEAL
62%
56%
Medium (Faceted)

Pointed
EXCELLENT
EXCELLENT
VERY SLIGHT
IGI LG720544551

Cutler
Polish
Symmetry
Fluorescence
Inscription(s)

Comments: This Laboratory Grown Diamond was created by Chemical Vapor Deposition (CVD) growth process. Indications of post-growth treatment.