



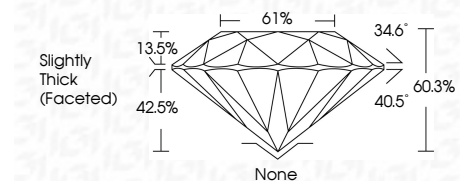
ELECTRONIC COPY

LG720538716
Report verification at igi.org



August 20, 2025
IGI Report Number **LG720538716**
Description **LABORATORY GROWN DIAMOND**
Shape and Cutting Style **ROUND BRILLIANT**
Measurements **8.67 - 8.73 X 5.24 MM**

GRADING RESULTS
Carat Weight **2.50 CARATS**
Color Grade **FANCY INTENSE PINK**
Clarity Grade **VVS 2**
Cut Grade **EXCELLENT**



ADDITIONAL GRADING INFORMATION
Polish **EXCELLENT**
Symmetry **EXCELLENT**
Fluorescence **STRONG**
Inscription(s) **IGI LG720538716**
Comments: This Laboratory Grown Diamond was created by Chemical Vapor Deposition (CVD) growth process. Indications of post-growth treatment.



August 20, 2025
IGI Report No LG720538716
ROUND BRILLIANT
8.67 - 8.73 X 5.24 MM
2.50 CARATS
FANCY INTENSE PINK
VVS 2
EXCELLENT
60.3%
61%
Slightly Thick (Faceted)
None
EXCELLENT
EXCELLENT
STRONG
IGI LG720538716
Comments: This Laboratory Grown Diamond was created by Chemical Vapor Deposition (CVD) growth process. Indications of post-growth treatment.

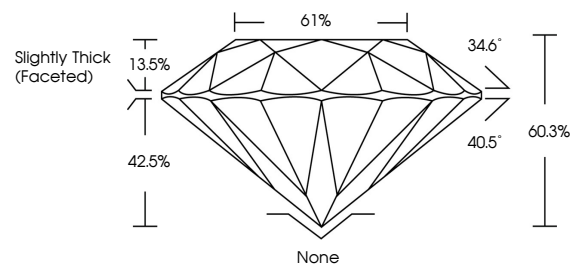
August 20, 2025
IGI Report Number **LG720538716**
Description **LABORATORY GROWN DIAMOND**
Shape and Cutting Style **ROUND BRILLIANT**
Measurements **8.67 - 8.73 X 5.24 MM**

GRADING RESULTS
Carat Weight **2.50 CARATS**
Color Grade **FANCY INTENSE PINK**
Clarity Grade **VVS 2**
Cut Grade **EXCELLENT**

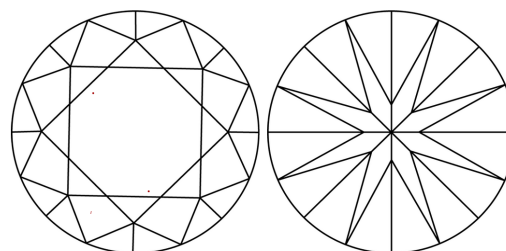
ADDITIONAL GRADING INFORMATION
Polish **EXCELLENT**
Symmetry **EXCELLENT**
Fluorescence **STRONG**
Inscription(s) **IGI LG720538716**

Comments: This Laboratory Grown Diamond was created by Chemical Vapor Deposition (CVD) growth process. Indications of post-growth treatment.

PROPORTIONS

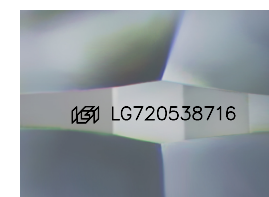


CLARITY CHARACTERISTICS



KEY TO SYMBOLS

Red symbols indicate internal characteristics.
Green symbols indicate external characteristics.



Sample Image Used

COLOR

D E F G H I J Faint Very Light Light

CLARITY

IF WS¹⁻² VS¹⁻² SI¹⁻² I¹⁻³

Internally Flawless Very Very Slightly Included Very Slightly Included Slightly Included Included

