

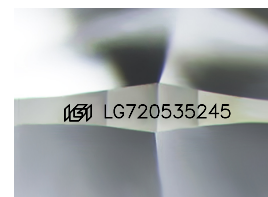
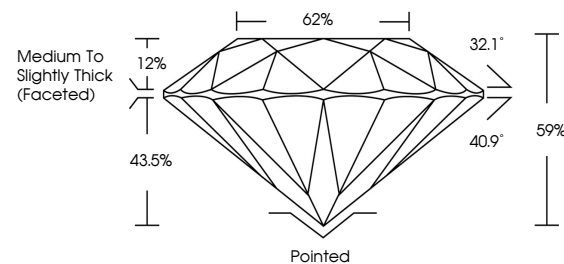


ELECTRONIC COPY

LABORATORY GROWN DIAMOND REPORT

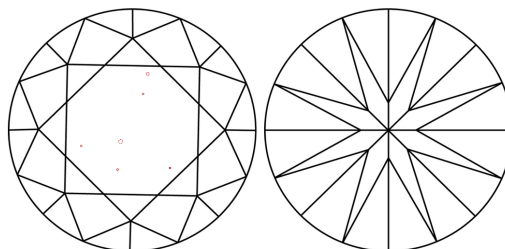
LG720535245
Report verification at igi.org

PROPORTIONS



Sample Image Used

CLARITY CHARACTERISTICS



KEY TO SYMBOLS

Red symbols indicate internal characteristics.
Green symbols indicate external characteristics.

COLOR

D E F G H I J Faint Very Light Light

CLARITY

IF WS¹⁻² VS¹⁻² SI¹⁻² |¹⁻³

Internally Flawless	Very Very Slightly Included	Very Slightly Included	Slightly Included	Included
------------------------	--------------------------------	---------------------------	----------------------	----------



July 3, 2025

IGI Report Number **LG720535245**

Description	LABORATORY GROWN DIAMOND
-------------	--------------------------

Shape and Cutting Style **ROUND BRILLIANT**

Measurements 8.73 - 8.79 X 5.17 MM

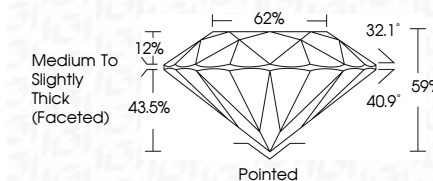
GRADING RESULTS

Carat Weight **2.46 CARATS**

Color Grade	D
-------------	---

Clarity Grade VS 1

Cut Grade **IDEAL**



ADDITIONAL GRADING INFORMATION

Polish **EXCELLENT**Symmetry **EXCELLENT**Fluorescence **NONE**Inscription(s) LG720535245

Comments: This Laboratory Grown Diamond was created by Chemical Vapor Deposition (CVD) growth process.
Type IIa



© IGI 2020, International Gemological Institute

FD - 10 20

www.igi.org



THIS DOCUMENT WAS PRODUCED WITH THE FOLLOWING SECURITY MEASURES: SPECIAL DOCUMENT PAPER, INK SCREENS, WATERMARK, BACKGROUND DESIGNS, HOLOGRAM AND OTHER SECURITY FEATURES NOT LISTED AND DO EXCEED DOCUMENT SECURITY INDUSTRY GUIDELINE

July 3, 2025	GI Report No. LG7355246	2.46 CARATS	D	VS 1	IDEAL	99%	62%	Medium to Slightly Thick (Faceted)	Polished	EXCELLENT	EXCELLENT	NONE	1691 LG7355246.05	Comments: This is a Fancy Crown Diamond was created by Chemical Vapor Deposition (CVD) growth process. Type IIa
ROUND BRILLIANT	Color Weight	7.75 - 8.75 X 5.17 MM	Color Grade	Clarity Grade	Cut Grade	Depth	Table	Girdle	Symmetry	Fluorescence	Inscriptions(s)			