

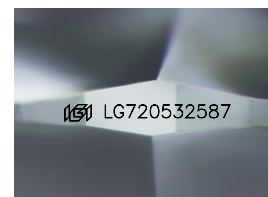
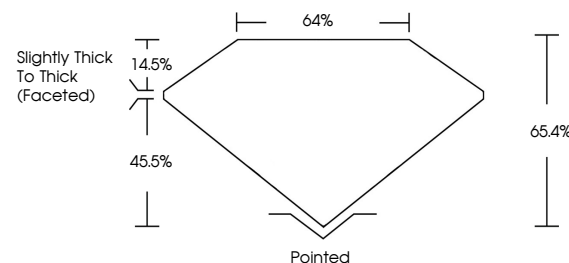


**ELECTRONIC COPY**

## LABORATORY GROWN DIAMOND REPORT

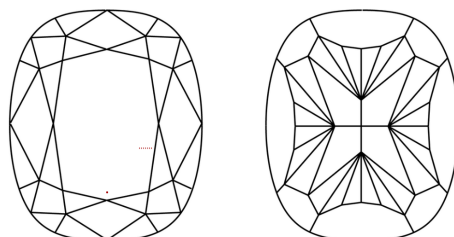
LG720532587  
Report verification at [igi.org](https://igi.org)

## PROPORTIONS



Sample Image Used

## CLARITY CHARACTERISTICS



### KEY TO SYMBOLS

Red symbols indicate internal characteristics.  
Green symbols indicate external characteristics.

## COLOR

D E F G H I J Faint Very Light Light

## CLARITY

IF      VWS<sup>1-2</sup>      VS<sup>1-2</sup>      SI<sup>1-2</sup>      I<sup>1-3</sup>

Internally Flawless	Very Very Slightly Included	Very Slightly Included	Slightly Included	Included
------------------------	--------------------------------	---------------------------	----------------------	----------

## LABORATORY GROWN DIAMOND REPORT



July 8, 2025

IGI Report Number **LG720532587**Description **LABORATORY GROWN DIAMOND**

Shape and Cutting Style **CUSHION MODIFIED  
BRILLIANT**

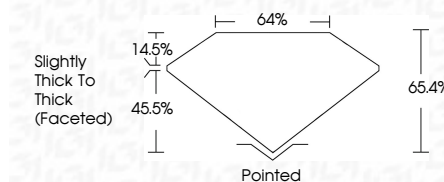
Measurements 9.62 X 7.36 X 4.81 MM

## GRADING RESULTS

Carat Weight **3.05 CARATS**

Color Grade D

Clarity Grade VS 1



### ADDITIONAL GRADING INFORMATION

Polish **EXCELLENT**Symmetry **EXCELLENT**Fluorescence **NONE**Inscription(s)  LG720532587

Comments: This Laboratory Grown Diamond was created by Chemical Vapor Deposition (CVD) growth process.  
Type IIa



July 8, 2025	GI Report No. LG72632687	3.05 CARATS	Vs 1	65-6%	64%	Parted	EXCELLENT	EXCELLENT	NONE	lg016726326857
CUSHION MODIFIED BRILLIANT						Slightly Thick to Thick (foaled)				
6.62 X 7.36 X 4.81 MM										
Coral Weight										
Color Grade										
Clarity Grade										
Depth										
Table										
Grade										
Quiet										
Polish										
Symmetry										
Fluorescence										
Inscription(s)										

Comments:

The Laboratory Crown Diamond was  
 a natural color report Deposition  
 (CVD) growth process.  
 type IIG

**Comments:**  
This Laboratory Grown Diamond was  
created by Chemical Vapor Deposition  
(CVD) growth process.