



ELECTRONIC COPY

LG720525987
Report verification at igi.org



July 11, 2025
IGI Report Number LG720525987
Description LABORATORY GROWN DIAMOND
Shape and Cutting Style CUSHION MODIFIED BRILLIANT
Measurements 7.47 X 6.50 X 4.40 MM
GRADING RESULTS
Carat Weight 1.93 CARAT
Color Grade FANCY VIVID BLUE
Clarity Grade VVS 2

LABORATORY GROWN DIAMOND REPORT

July 11, 2025
IGI Report Number LG720525987
Description LABORATORY GROWN DIAMOND
Shape and Cutting Style CUSHION MODIFIED BRILLIANT
Measurements 7.47 X 6.50 X 4.40 MM

GRADING RESULTS

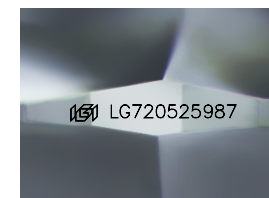
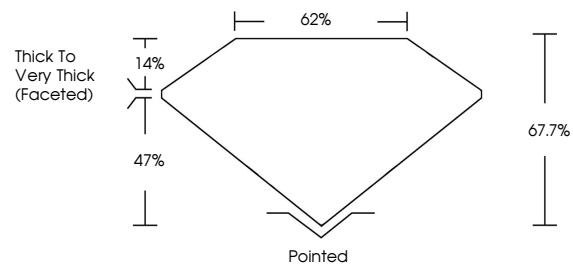
Carat Weight 1.93 CARAT
Color Grade FANCY VIVID BLUE
Clarity Grade VVS 2

ADDITIONAL GRADING INFORMATION

Polish EXCELLENT
Symmetry EXCELLENT
Fluorescence NONE
Inscription(s) IGI LG720525987

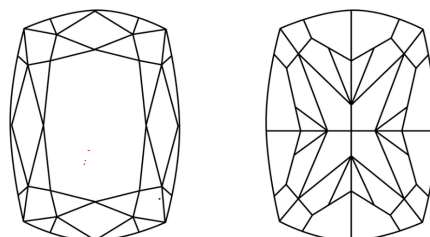
Comments: This Laboratory Grown Diamond was created by Chemical Vapor Deposition (CVD) growth process. Indications of post-growth treatment.

PROPORTIONS



Sample Image Used

CLARITY CHARACTERISTICS



KEY TO SYMBOLS

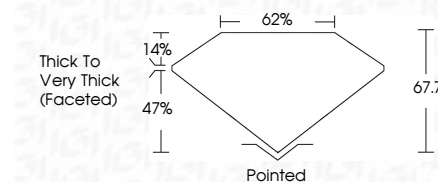
Red symbols indicate internal characteristics.
Green symbols indicate external characteristics.

COLOR

D E F G H I J Faint Very Light Light

CLARITY

IF VVS 1-2 VS 1-2 SI 1-2 I 1-3
Internally Flawless Very Very Slightly Included Very Slightly Included Slightly Included Included



ADDITIONAL GRADING INFORMATION

Polish EXCELLENT
Symmetry EXCELLENT
Fluorescence NONE
Inscription(s) IGI LG720525987
Comments: This Laboratory Grown Diamond was created by Chemical Vapor Deposition (CVD) growth process. Indications of post-growth treatment.



July 11, 2025
IGI Report No LG720525987
CUSHION MODIFIED BRILLIANT
1.93 CARAT
Carat Weight
FANCY VIVID BLUE
Color Grade
VVS 2
Clarity Grade
7.47 X 6.50 X 4.40 MM
Depth 67.7%
Table 62%
Girdle Thick to Very Thick (Faceted)
Culet Pointed
Polish EXCELLENT
Symmetry EXCELLENT
Fluorescence NONE
Inscription(s) IGI LG720525987

Comments: This Laboratory Grown Diamond was created by Chemical Vapor Deposition (CVD) growth process. Indications of post-growth treatment.