



ELECTRONIC COPY

LG720525980
Report verification at igi.org



July 16, 2025
IGI Report Number **LG720525980**
Description **LABORATORY GROWN DIAMOND**
Shape and Cutting Style **SQUARE CUSHION MODIFIED BRILLIANT**
Measurements **11.26 X 10.81 X 6.99 MM**
GRADING RESULTS
Carat Weight **8.07 CARATS**
Color Grade **FANCY INTENSE PINK**
Clarity Grade **VS 1**

LABORATORY GROWN DIAMOND REPORT

July 16, 2025
IGI Report Number **LG720525980**
Description **LABORATORY GROWN DIAMOND**
Shape and Cutting Style **SQUARE CUSHION MODIFIED BRILLIANT**
Measurements **11.26 X 10.81 X 6.99 MM**

GRADING RESULTS

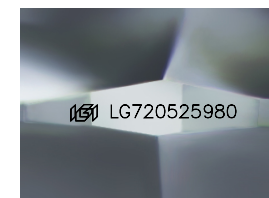
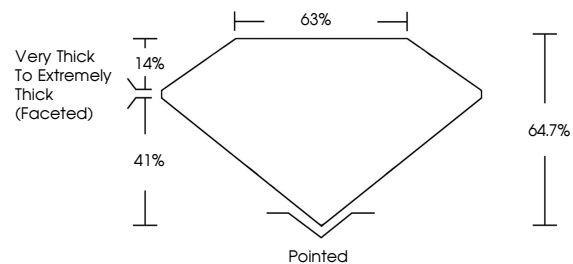
Carat Weight **8.07 CARATS**
Color Grade **FANCY INTENSE PINK**
Clarity Grade **VS 1**

ADDITIONAL GRADING INFORMATION

Polish **EXCELLENT**
Symmetry **EXCELLENT**
Fluorescence **SLIGHT**
Inscription(s) **IGI LG720525980**

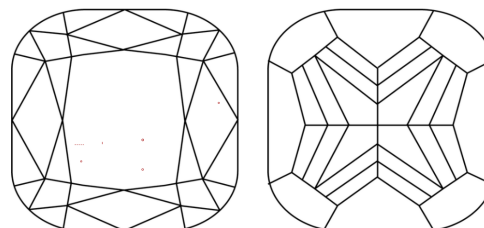
Comments: This Laboratory Grown Diamond was created by Chemical Vapor Deposition (CVD) growth process. Indications of post-growth treatment.

PROPORTIONS



Sample Image Used

CLARITY CHARACTERISTICS



KEY TO SYMBOLS

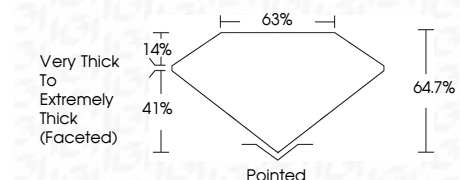
Red symbols indicate internal characteristics.
Green symbols indicate external characteristics.

COLOR

D E F G H I J Faint Very Light Light

CLARITY

IF	VS ¹⁻²	VS ¹⁻²	SI ¹⁻²	I ¹⁻³
Internally Flawless	Very Very Slightly Included	Very Slightly Included	Slightly Included	Included



ADDITIONAL GRADING INFORMATION

Polish **EXCELLENT**
Symmetry **EXCELLENT**
Fluorescence **SLIGHT**
Inscription(s) **IGI LG720525980**
Comments: This Laboratory Grown Diamond was created by Chemical Vapor Deposition (CVD) growth process. Indications of post-growth treatment.



July 16, 2025
IGI Report No **LG720525980**
SQUARE CUSHION MODIFIED BRILLIANT
11.26 X 10.81 X 6.99 MM
8.07 CARATS
FANCY INTENSE PINK
VS 1
64.7%
63%
Very Thick to Extremely Thick (Faceted)
Pointed
EXCELLENT
EXCELLENT
SLIGHT
IGI LG720525980
Comments: This Laboratory Grown Diamond was created by Chemical Vapor Deposition (CVD) growth process. Indications of post-growth treatment.