



**ELECTRONIC COPY**

LG720525475  
Report verification at igi.org



July 10, 2025

IGI Report Number **LG720525475**

Description **LABORATORY GROWN DIAMOND**

Shape and Cutting Style **EMERALD CUT**

Measurements **9.67 X 6.78 X 4.54 MM**

**GRADING RESULTS**

Carat Weight **3.06 CARATS**

Color Grade **F**

Clarity Grade **VVS 2**

July 10, 2025  
IGI Report Number **LG720525475**  
Description **LABORATORY GROWN DIAMOND**  
Shape and Cutting Style **EMERALD CUT**  
Measurements **9.67 X 6.78 X 4.54 MM**

**GRADING RESULTS**

Carat Weight **3.06 CARATS**

Color Grade **F**

Clarity Grade **VVS 2**

**ADDITIONAL GRADING INFORMATION**

Polish **EXCELLENT**

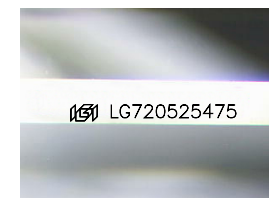
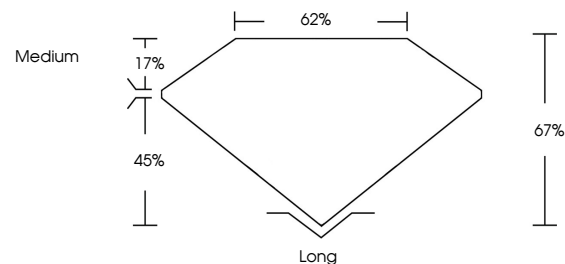
Symmetry **EXCELLENT**

Fluorescence **NONE**

Inscription(s) **IGI LG720525475**

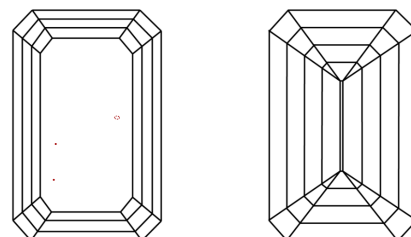
Comments: This Laboratory Grown Diamond was created by Chemical Vapor Deposition (CVD) growth process.  
Type IIa

**PROPORTIONS**



Sample Image Used

**CLARITY CHARACTERISTICS**



**KEY TO SYMBOLS**

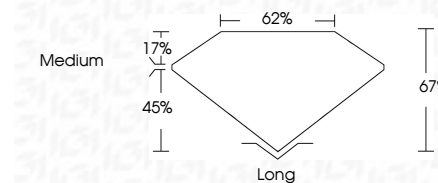
Red symbols indicate internal characteristics.  
Green symbols indicate external characteristics.

**COLOR**

D E F G H I J Faint Very Light Light

**CLARITY**

IF	VS <sup>1-2</sup>	VS <sup>1-2</sup>	SI <sup>1-2</sup>	I <sup>1-3</sup>
Internally Flawless	Very Very Slightly Included	Very Slightly Included	Slightly Included	Included



**ADDITIONAL GRADING INFORMATION**

Polish **EXCELLENT**

Symmetry **EXCELLENT**

Fluorescence **NONE**

Inscription(s) **IGI LG720525475**

Comments: This Laboratory Grown Diamond was created by Chemical Vapor Deposition (CVD) growth process.  
Type IIa



**IGI**



July 10, 2025  
IGI Report No LG720525475  
EMERALD CUT  
3.06 CARATS  
F  
9.67 X 6.78 X 4.54 MM  
Color Grade  
VS 2  
Depth 67%  
Table 62%  
Medium  
Long  
EXCELLENT  
EXCELLENT  
NONE  
IGI LG720525475  
Comments: This Laboratory Grown Diamond was created by Chemical Vapor Deposition (CVD) growth process.  
Type IIa