



# INTERNATIONAL GEMOLOGICAL INSTITUTE

ELECTRONIC COPY

## LABORATORY GROWN DIAMOND REPORT

July 14, 2025  
 IGI Report Number **LG720522211**  
 Description **LABORATORY GROWN DIAMOND**  
 Shape and Cutting Style **CUT CORNERED RECTANGULAR MODIFIED  
BRILLIANT**  
 Measurements **6.60 X 4.53 X 2.99 MM**

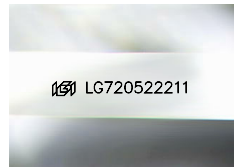
### GRADING RESULTS

Carat Weight **0.83 CARAT**  
 Color Grade **FANCY VIVID PINK**  
 Clarity Grade **VVS 2**

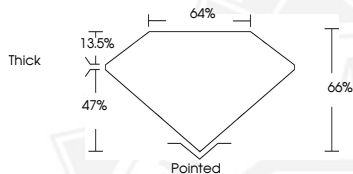
### ADDITIONAL GRADING INFORMATION

Polish **EXCELLENT**  
 Symmetry **EXCELLENT**  
 Fluorescence **STRONG**  
 Inscription(s) **IGI LG720522211**

Comments: This Laboratory Grown Diamond was created by  
 Chemical Vapor Deposition (CVD) growth process.  
 Indications of post-growth treatment.



Sample Image Used



July 14, 2025  
 IGI Report Number **LG720522211**  
 CUT CORNERED RECTANGULAR  
 MODIFIED BRILLIANT  
 LABORATORY GROWN DIAMOND  
 6.60 X 4.53 X 2.99 MM  
 Carat Weight **0.83 CARAT**  
 Color Grade **FANCY VIVID PINK**  
 Clarity Grade **VVS 2**  
 Polish **EXCELLENT**  
 Symmetry **EXCELLENT**  
 Fluorescence **STRONG**  
 Inscription(s) **IGI LG720522211**  
 Comments: This Laboratory Grown  
 Diamond was created by  
 Chemical Vapor Deposition (CVD)  
 growth process. Indications of  
 post-growth treatment.



July 14, 2025  
 IGI Report Number **LG720522211**  
 CUT CORNERED RECTANGULAR  
 MODIFIED BRILLIANT  
 LABORATORY GROWN DIAMOND  
 6.60 X 4.53 X 2.99 MM  
 Carat Weight **0.83 CARAT**  
 Color Grade **FANCY VIVID PINK**  
 Clarity Grade **VVS 2**  
 Polish **EXCELLENT**  
 Symmetry **EXCELLENT**  
 Fluorescence **STRONG**  
 Inscription(s) **IGI LG720522211**  
 Comments: This Laboratory Grown  
 Diamond was created by  
 Chemical Vapor Deposition (CVD)  
 growth process. Indications of  
 post-growth treatment.

THIS DOCUMENT WAS PRODUCED WITH THE FOLLOWING SECURITY MEASURES: SPECIAL DOCUMENT PAPER, INK SCREENS, WATERMARK, BACKGROUND DESIGNS, HOLOGRAM AND OTHER SECURITY FEATURES NOT LISTED AND DO EXCEED DOCUMENT SECURITY INDUSTRY GUIDELINES.

For terms & conditions and to verify this report, please visit [www.igi.org](http://www.igi.org)