



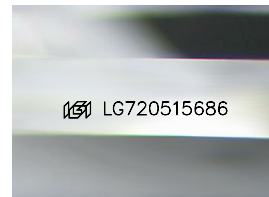
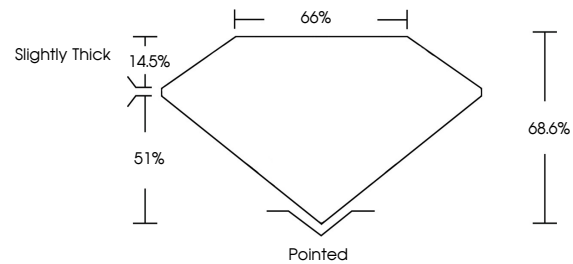
**INTERNATIONAL
GEMOLOGICAL
INSTITUTE**

ELECTRONIC COPY

LABORATORY GROWN DIAMOND REPORT

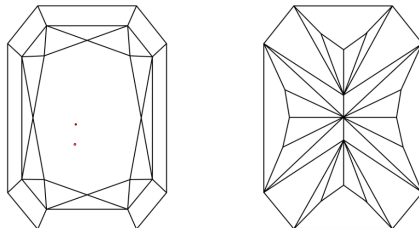
LG720515686
Report verification at igi.org

PROPORTIONS



Sample Image Used

CLARITY CHARACTERISTICS



KEY TO SYMBOLS

Red symbols indicate internal characteristics.
Green symbols indicate external characteristics.

COLOR

D E F G H I J Faint Very Light Light

CLARITY

IF WS¹⁻² VS¹⁻² SI¹⁻² I¹⁻³

Internally Flawless	Very Very Slightly Included	Very Slightly Included	Slightly Included	Included
------------------------	--------------------------------	---------------------------	----------------------	----------



© IGI 2020, International Gemological Institute

FD - 10 20

www.igi.org

THIS DOCUMENT WAS PRODUCED WITH THE FOLLOWING SECURITY MEASURES: SPECIAL DOCUMENT PAPER, INK SCREENS, WATERMARK BACKGROUND DESIGNS, HOLOGRAM AND OTHER SECURITY FEATURES NOT LISTED AND DO EXCEED DOCUMENT SECURITY INDUSTRY GUIDELINES.

LABORATORY GROWN DIAMOND REPORT



July 8, 2025

IGI Report Number **LG720515686**

Description	LABORATORY GROWN DIAMOND
-------------	--------------------------

Shape and Cutting Style

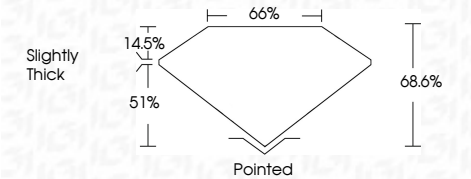
CUT CORNERED
RECTANGULAR MODIFIED
BRILLIANT

Measurements **15.90 X 10.37 X 7.11 MM**

GRADING RESULTS

Carat Weight **10.08 CARATS**

Color Grade	F
-------------	---

Clarity Grade **VVS 2**

ADDITIONAL GRADING INFORMATION

Polish **EXCELLENT**Symmetry **EXCELLENT**Fluorescence **NONE**Inscription(s)  LG720515686

Comments: This Laboratory Grown Diamond was created by Chemical Vapor Deposition (CVD) growth process.
Type IIa



IGI

July 8, 2025	IGI Report No. LG7205 15886	10.08 CARATS
	CUT CORNERED RECT. MODIFIED BRILLIANT	F
	15.90 X 10.37 X 7.11 MM	VVS 2
	Color Grade	6a.6%
	Clarity Grade	6a%
	Depth	Slightly Thick
	Table	
	Girdle	
	Culet	Pointed
	Polish	EXCELLENT
	Symmetry	EXCELLENT
	Fluorescence	NONE
	Inscriptions(s)	gpl LG7205 15886
<p>Comments: This Laboratory Grown Diamond was created by Chemical Vapor Deposition (CVD) growth process. Type IId</p>		

Comments:
This Laboratory Grown Diamond was
created by Chemical Vapor Deposition
(CVD) growth process.
Type IIa