



**INTERNATIONAL
GEMOLOGICAL
INSTITUTE**

ELECTRONIC COPY



July 4, 2025

IGI Report Number LG720511594

ROUND BRILLIANT

LABORATORY GROWN DIAMOND

6.42 - 6.47 X 3.83 MM

Carat Weight **0.97 CARAT**

Color Grade **D**

Clarity Grade **VS 1**

Cut Grade **IDEAL**

Polish **EXCELLENT**

Symmetry **EXCELLENT**

Fluorescence **NONE**

Inscription(s) LG720511594

Comments: This Laboratory Grown Diamond was created by Chemical Vapor Deposition (CVD) growth process. Type Ila

LABORATORY GROWN DIAMOND REPORT

July 4, 2025

IGI Report Number **LG720511594**

Description **LABORATORY GROWN DIAMOND**

Shape and Cutting Style **ROUND BRILLIANT**

Measurements **6.42 - 6.47 X 3.83 MM**

GRADING RESULTS

Carat Weight **0.97 CARAT**

Color Grade **D**

Clarity Grade **VS 1**

Cut Grade **IDEAL**

ADDITIONAL GRADING INFORMATION

Polish **EXCELLENT**

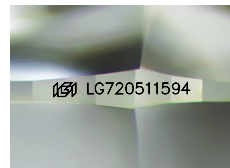
Symmetry **EXCELLENT**

Fluorescence **NONE**

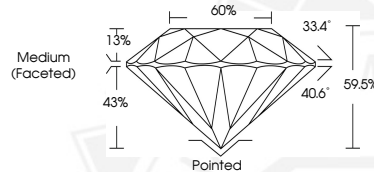
Inscription(s) LG720511594

Comments: This Laboratory Grown Diamond was created by Chemical Vapor Deposition (CVD) growth process.

Type Ila



Sample Image Used



July 4, 2025

IGI Report Number LG720511594

ROUND BRILLIANT

LABORATORY GROWN DIAMOND

6.42 - 6.47 X 3.83 MM

Carat Weight **0.97 CARAT**

Color Grade **D**

Clarity Grade **VS 1**

Cut Grade **IDEAL**

Polish **EXCELLENT**

Symmetry **EXCELLENT**

Fluorescence **NONE**

Inscription(s) LG720511594

Comments: This Laboratory Grown Diamond was created by Chemical Vapor Deposition (CVD) growth process. Type Ila



THIS DOCUMENT WAS PRODUCED WITH THE FOLLOWING SECURITY MEASURES: SPECIAL DOCUMENT PAPER, INK SCREENS, WATERMARK, BACKGROUND DESIGNS, HOLOGRAM AND OTHER SECURITY FEATURES NOT LISTED AND DO EXCEED DOCUMENT SECURITY INDUSTRY GUIDELINES.

For terms & conditions and to verify this report, please visit www.igi.org