



**ELECTRONIC COPY**

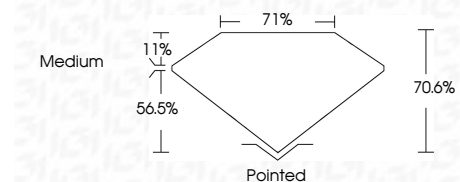
LG720502245  
Report verification at igi.org



July 2, 2025  
IGI Report Number **LG720502245**  
Description **LABORATORY GROWN DIAMOND**  
Shape and Cutting Style **PRINCESS CUT**  
Measurements **6.99 X 6.94 X 4.90 MM**

**GRADING RESULTS**

Carat Weight **2.06 CARATS**  
Color Grade **H**  
Clarity Grade **VVS 2**



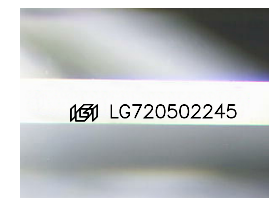
**ADDITIONAL GRADING INFORMATION**

Polish **EXCELLENT**  
Symmetry **EXCELLENT**  
Fluorescence **NONE**  
Inscription(s) **IGI LG720502245**  
Comments: This Laboratory Grown Diamond was created by Chemical Vapor Deposition (CVD) growth process. Type IIa



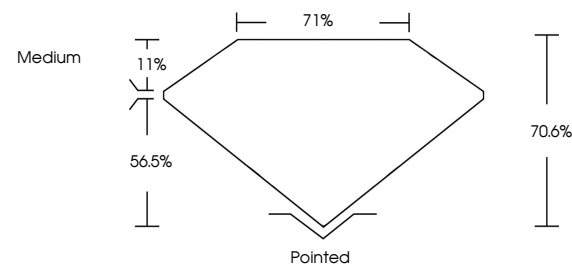
July 2, 2025  
IGI Report No LG720502245  
**PRINCESS CUT**  
2.06 CARATS **H**  
6.99 X 6.94 X 4.90 MM  
Carat Weight **VVS 2**  
Color Grade **70.6%**  
Clarity Grade **71%**  
Depth **Medium**  
Table **Pointed**  
Grades **EXCELLENT**  
Culet **EXCELLENT**  
Polish **EXCELLENT**  
Symmetry **NONE**  
Fluorescence **NONE**  
Inscription(s) **IGI LG720502245**

Comments: This Laboratory Grown Diamond was created by Chemical Vapor Deposition (CVD) growth process. Type IIa

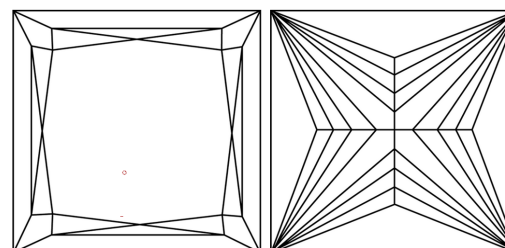


Sample Image Used

**PROPORTIONS**



**CLARITY CHARACTERISTICS**



**KEY TO SYMBOLS**

Red symbols indicate internal characteristics.  
Green symbols indicate external characteristics.

**COLOR**

D E F G H I J Faint Very Light Light

**CLARITY**

IF	VS <sup>1-2</sup>	VS <sup>1-2</sup>	SI <sup>1-2</sup>	I <sup>1-3</sup>
Internally Flawless	Very Very Slightly Included	Very Slightly Included	Slightly Included	Included

