



ELECTRONIC COPY

LG719574310
Report verification at igi.org



July 2, 2025
IGI Report Number **LG719574310**
Description **LABORATORY GROWN DIAMOND**
Shape and Cutting Style **MODIFIED NONAGON STEP CUT**
Measurements **9.69 X 6.10 X 3.54 MM**
GRADING RESULTS
Carat Weight **1.47 CARAT**
Color Grade **E**
Clarity Grade **VVS 2**

LABORATORY GROWN DIAMOND REPORT

July 2, 2025
IGI Report Number **LG719574310**
Description **LABORATORY GROWN DIAMOND**
Shape and Cutting Style **MODIFIED NONAGON STEP CUT**
Measurements **9.69 X 6.10 X 3.54 MM**

GRADING RESULTS

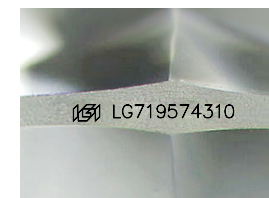
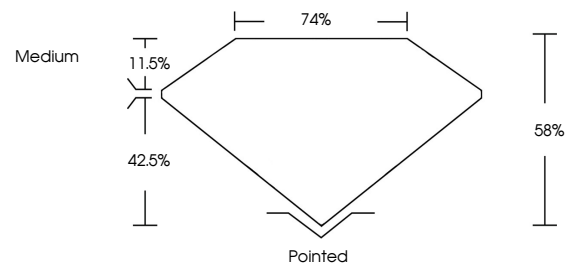
Carat Weight **1.47 CARAT**
Color Grade **E**
Clarity Grade **VVS 2**

ADDITIONAL GRADING INFORMATION

Polish **EXCELLENT**
Symmetry **EXCELLENT**
Fluorescence **NONE**
Inscription(s) **IGI LG719574310**

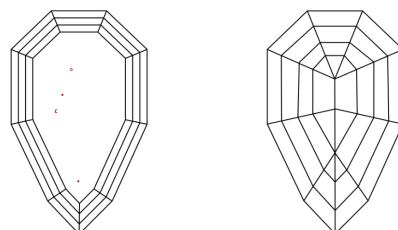
Comments: This Laboratory Grown Diamond was created by Chemical Vapor Deposition (CVD) growth process. Type IIa

PROPORTIONS



Sample Image Used

CLARITY CHARACTERISTICS



KEY TO SYMBOLS

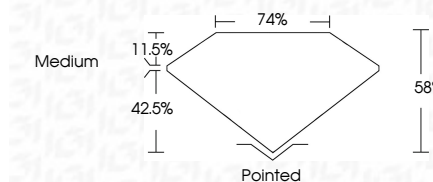
Red symbols indicate internal characteristics.
Green symbols indicate external characteristics.

COLOR

D E F G H I J Faint Very Light Light

CLARITY

IF	VS ¹⁻²	VVS ¹⁻²	S ¹⁻²	I ¹⁻³
Internally Flawless	Very Very Slightly Included	Very Slightly Included	Slightly Included	Included



ADDITIONAL GRADING INFORMATION

Polish **EXCELLENT**
Symmetry **EXCELLENT**
Fluorescence **NONE**
Inscription(s) **IGI LG719574310**
Comments: This Laboratory Grown Diamond was created by Chemical Vapor Deposition (CVD) growth process. Type IIa



July 2, 2025
IGI Report No LG719574310
MODIFIED NONAGON STEP CUT
9.69 X 6.10 X 3.54 MM
1.47 CARAT
E
VVS 2
58%
74%
Medium
Pointed
EXCELLENT
EXCELLENT
NONE
IGI LG719574310
Comments: This Laboratory Grown Diamond was created by Chemical Vapor Deposition (CVD) growth process. Type IIa