



ELECTRONIC COPY

LG719570533
Report verification at igi.org



June 30, 2025
IGI Report Number **LG719570533**
Description **LABORATORY GROWN DIAMOND**
Shape and Cutting Style **PRINCESS CUT**
Measurements **9.68 X 9.50 X 6.95 MM**
GRADING RESULTS
Carat Weight **5.66 CARATS**
Color Grade **E**
Clarity Grade **VVS 2**

June 30, 2025
IGI Report Number **LG719570533**
Description **LABORATORY GROWN DIAMOND**
Shape and Cutting Style **PRINCESS CUT**
Measurements **9.68 X 9.50 X 6.95 MM**

GRADING RESULTS

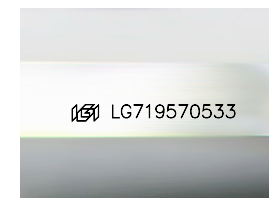
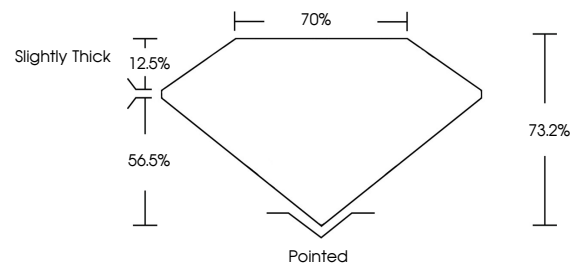
Carat Weight **5.66 CARATS**
Color Grade **E**
Clarity Grade **VVS 2**

ADDITIONAL GRADING INFORMATION

Polish **EXCELLENT**
Symmetry **EXCELLENT**
Fluorescence **NONE**
Inscription(s) **IGI LG719570533**

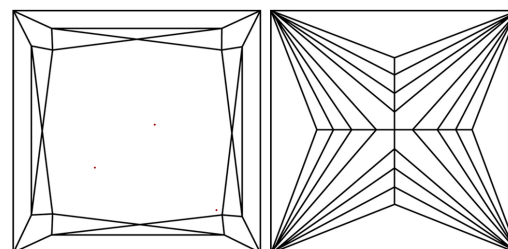
Comments: This Laboratory Grown Diamond was created by Chemical Vapor Deposition (CVD) growth process. Type IIa

PROPORTIONS



Sample Image Used

CLARITY CHARACTERISTICS



KEY TO SYMBOLS

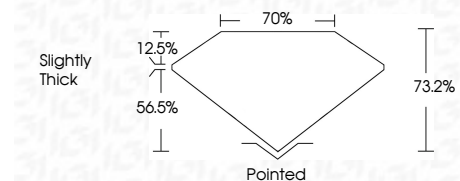
Red symbols indicate internal characteristics.
Green symbols indicate external characteristics.

COLOR

D E F G H I J Faint Very Light Light

CLARITY

IF	VS ¹⁻²	VS ¹⁻²	SI ¹⁻²	I ¹⁻³
Internally Flawless	Very Very Slightly Included	Very Slightly Included	Slightly Included	Included



ADDITIONAL GRADING INFORMATION

Polish **EXCELLENT**
Symmetry **EXCELLENT**
Fluorescence **NONE**
Inscription(s) **IGI LG719570533**
Comments: This Laboratory Grown Diamond was created by Chemical Vapor Deposition (CVD) growth process. Type IIa



June 30, 2025
IGI Report No LG719570533
PRINCESS CUT
9.68 X 9.50 X 6.95 MM
5.66 CARATS
E
VVS 2
73.2%
70%
Slightly Thick
Pointed
EXCELLENT
EXCELLENT
NONE
IGI LG719570533
Comments: This Laboratory Grown Diamond was created by Chemical Vapor Deposition (CVD) growth process. Type IIa