



ELECTRONIC COPY

LG719567758
Report verification at igi.org



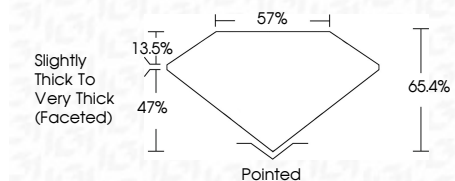
July 11, 2025

IGI Report Number **LG719567758**
Description **LABORATORY GROWN DIAMOND**
Shape and Cutting Style **CUSHION MODIFIED BRILLIANT**

Measurements **10.83 X 7.65 X 5.00 MM**

GRADING RESULTS

Carat Weight **3.63 CARATS**
Color Grade **FANCY VIVID PINK**
Clarity Grade **VVS 2**



ADDITIONAL GRADING INFORMATION

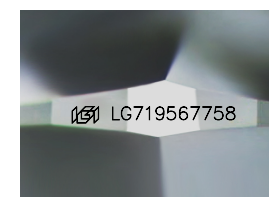
Polish **VERY GOOD**
Symmetry **VERY GOOD**
Fluorescence **SLIGHT**
Inscription(s) **IGI LG719567758**

Comments: This Laboratory Grown Diamond was created by Chemical Vapor Deposition (CVD) growth process. Indications of post-growth treatment.



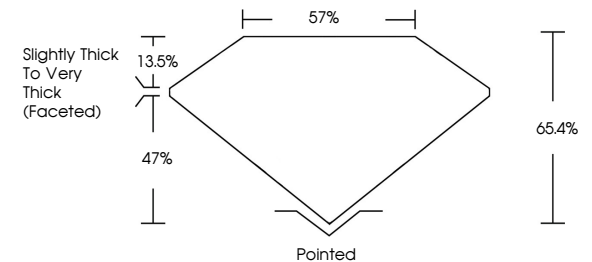
July 11, 2025
IGI Report No LG719567758
CUSHION MODIFIED BRILLIANT
3.63 CARATS
FANCY VIVID PINK
VVS 2
10.83 X 7.65 X 5.00 MM
65.4%
07%
Slightly Thick To Very Thick (Faceted)
Pointed
Polish **VERY GOOD**
Symmetry **VERY GOOD**
Fluorescence **SLIGHT**
Inscription(s) **IGI LG719567758**

Comments: This Laboratory Grown Diamond was created by Chemical Vapor Deposition (CVD) growth process. Indications of post-growth treatment.

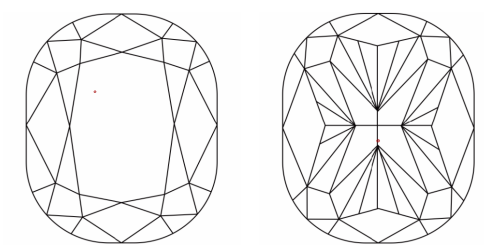


Sample Image Used

PROPORTIONS



CLARITY CHARACTERISTICS



KEY TO SYMBOLS

Red symbols indicate internal characteristics.
Green symbols indicate external characteristics.

COLOR

D E F G H I J Faint Very Light Light

CLARITY

IF	VS ¹⁻²	VS ¹⁻²	SI ¹⁻²	I ¹⁻³
Internally Flawless	Very Very Slightly Included	Very Slightly Included	Slightly Included	Included

