



ELECTRONIC COPY

LABORATORY GROWN DIAMOND REPORT

August 18, 2025	
IGI Report Number	LG719564220
Description	LABORATORY GROWN DIAMOND
Shape and Cutting Style	PRINCESS CUT
Measurements	8.11 X 7.92 X 5.32 MM

GRADING RESULTS

Carat Weight	3.08 CARATS
Color Grade	FANCY INTENSE ORANGE PINK
Clarity Grade	VVS 2

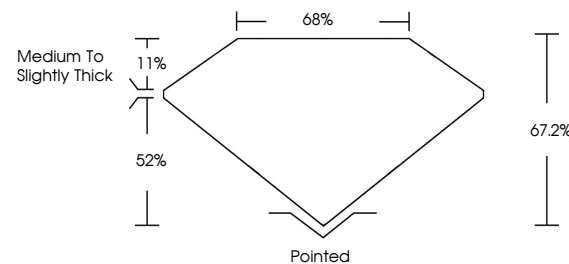
ADDITIONAL GRADING INFORMATION

Polish	EXCELLENT
Symmetry	EXCELLENT
Fluorescence	STRONG
Inscription(s)	161 LG719564220

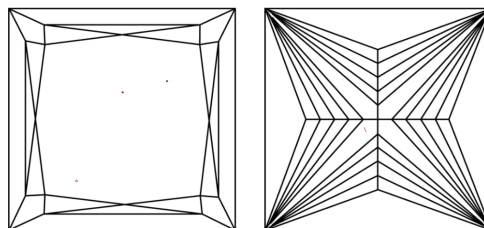
Comments: This Laboratory Grown Diamond was created by Chemical Vapor Deposition (CVD) growth process.
Indications of post-growth treatment.

LG719564220
Report verification at lgi.org

PROPORTIONS

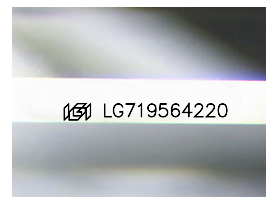


CLARITY CHARACTERISTICS



KEY TO SYMBOLS

Red symbols indicate internal characteristics.
Green symbols indicate external characteristics.



Sample Image Used

COLOR

D E F G H I J Faint Very Light Light

CLARITY

IF	VS ¹⁻²	VS ¹⁻²	SI ¹⁻²	I ¹⁻³
Internally Flawless	Very Very Slightly Included	Very Slightly Included	Slightly Included	Included

LABORATORY GROWN DIAMOND REPORT



August 18, 2025	
IGI Report Number	LG719564220
Description	LABORATORY GROWN DIAMOND
Shape and Cutting Style	PRINCESS CUT
Measurements	8.11 X 7.92 X 5.32 MM
GRADING RESULTS	
Carat Weight	3.08 CARATS
Color Grade	FANCY INTENSE ORANGE PINK
Clarity Grade	VVS 2

ADDITIONAL GRADING INFORMATION

Polish	EXCELLENT
Symmetry	EXCELLENT
Fluorescence	STRONG
Inscription(s)	(G) LG1719564220
<p>Comments: This Laboratory Grown Diamond was created by Chemical Vapor Deposition (CVD) growth process.</p> <p>Indications of post-growth treatment.</p>	



IG



© IGI 2020, International Gemological Institute

FD - 10 20



THIS DOCUMENT WAS PRODUCED WITH THE FOLLOWING SECURITY MEASURES: SPECIAL DOCUMENT PAPER, INK SCREENS, WATERMARK, BACKGROUND DESIGNS, HOLOGRAM AND OTHER SECURITY FEATURES NOT LISTED AND DO EXCEED DOCUMENT SECURITY INDUSTRY GUIDELINES

www.igi.org

August 18, 2025
 LGI Report No LG719564220
 PRINCESS CLIT

3.08 CARATS	Carat Weight
FANCY INTENSE	Color Grade
ORANGE PINK	Clarity Grade
VVS 2	Depth
67.2%	Table
66%	Girdle
Medium To Slightly Thick	Culet
Pointed	Polish
EXCELLENT	Symmetry
EXCELLENT	Fluorescence
STRONG	Comments
40811CT10645200	

Comments:
This Laboratory Grown Diamond was created by Chemical Vapor Deposition (CVD) growth process.
indications of post-growth treatment.