



**ELECTRONIC COPY**

LG719562609  
Report verification at igi.org



July 31, 2025  
IGI Report Number **LG719562609**  
Description **LABORATORY GROWN DIAMOND**  
Shape and Cutting Style **HEART BRILLIANT**  
Measurements **9.90 X 10.98 X 6.14 MM**  
**GRADING RESULTS**  
Carat Weight **3.87 CARATS**  
Color Grade **F**  
Clarity Grade **VS 1**

**LABORATORY GROWN DIAMOND REPORT**

July 31, 2025  
IGI Report Number **LG719562609**  
Description **LABORATORY GROWN DIAMOND**  
Shape and Cutting Style **HEART BRILLIANT**  
Measurements **9.90 X 10.98 X 6.14 MM**

**GRADING RESULTS**

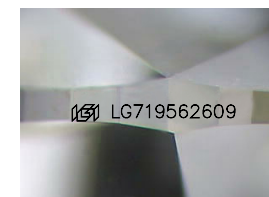
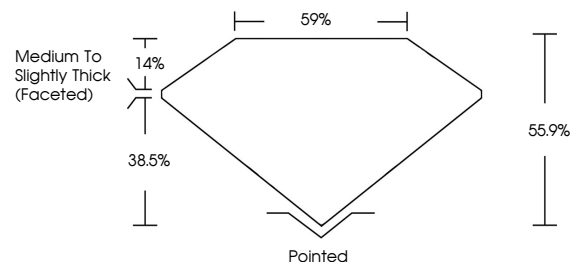
Carat Weight **3.87 CARATS**  
Color Grade **F**  
Clarity Grade **VS 1**

**ADDITIONAL GRADING INFORMATION**

Polish **EXCELLENT**  
Symmetry **VERY GOOD**  
Fluorescence **NONE**  
Inscription(s) **IGI LG719562609**

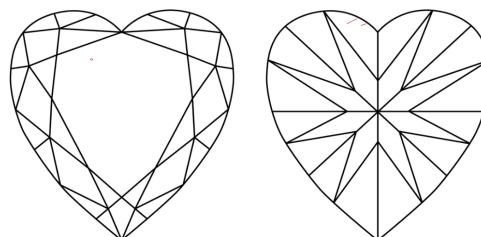
Comments: This Laboratory Grown Diamond was created by Chemical Vapor Deposition (CVD) growth process.  
Type IIa

**PROPORTIONS**



Sample Image Used

**CLARITY CHARACTERISTICS**



**KEY TO SYMBOLS**

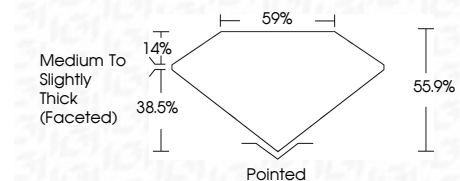
Red symbols indicate internal characteristics.  
Green symbols indicate external characteristics.

**COLOR**

D E F G H I J Faint Very Light Light

**CLARITY**

IF	VS <sup>1-2</sup>	VS <sup>1-2</sup>	SI <sup>1-2</sup>	I <sup>1-3</sup>
Internally Flawless	Very Very Slightly Included	Very Slightly Included	Slightly Included	Included



**ADDITIONAL GRADING INFORMATION**

Polish **EXCELLENT**  
Symmetry **VERY GOOD**  
Fluorescence **NONE**  
Inscription(s) **IGI LG719562609**  
Comments: This Laboratory Grown Diamond was created by Chemical Vapor Deposition (CVD) growth process.  
Type IIa



July 31, 2025  
IGI Report No LG719562609  
**HEART BRILLIANT**  
9.90 X 10.98 X 6.14 MM  
3.87 CARATS  
F  
VS 1  
55.9%  
38.5%  
14%  
Medium to Slightly Thick (Faceted)  
Pointed  
EXCELLENT  
VERY GOOD  
NONE  
IGI LG719562609  
Comments: This Laboratory Grown Diamond was created by Chemical Vapor Deposition (CVD) growth process.  
Type IIa