



LABORATORY GROWN DIAMOND REPORT

July 30, 2025
 IGI Report Number **LG719562534**
 Description **LABORATORY GROWN DIAMOND**
 Shape and Cutting Style **ROUND BRILLIANT**
 Measurements **4.89 - 4.94 X 3.03 MM**

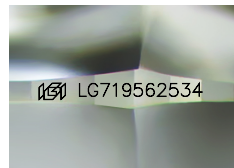
GRADING RESULTS

Carat Weight **0.45 CARAT**
 Color Grade **FANCY INTENSE PINK**
 Clarity Grade **VS 1**
 Cut Grade **EXCELLENT**

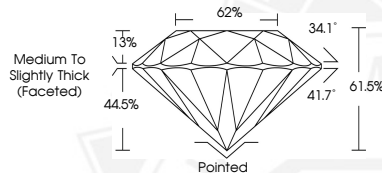
ADDITIONAL GRADING INFORMATION

Polish **EXCELLENT**
 Symmetry **VERY GOOD**
 Fluorescence **SLIGHT**
 Inscription(s) **IGI LG719562534**

Comments: This Laboratory Grown Diamond was created by Chemical Vapor Deposition (CVD) growth process. Indications of post-growth treatment.



Sample Image Used



July 30, 2025
 IGI Report Number **LG719562534**
 ROUND BRILLIANT
 LABORATORY GROWN DIAMOND
4.89 - 4.94 X 3.03 MM
 Carat Weight **0.45 CARAT**
 Color Grade **FANCY INTENSE PINK**
 Clarity Grade **VS 1**
 Cut Grade **EXCELLENT**
 Polish **EXCELLENT**
 Symmetry **VERY GOOD**
 Fluorescence **SLIGHT**
 Inscription(s) **IGI LG719562534**

Comments: This Laboratory Grown Diamond was created by Chemical Vapor Deposition (CVD) growth process. Indications of post-growth treatment.



July 30, 2025
 IGI Report Number **LG719562534**
 ROUND BRILLIANT
 LABORATORY GROWN DIAMOND
4.89 - 4.94 X 3.03 MM
 Carat Weight **0.45 CARAT**
 Color Grade **FANCY INTENSE PINK**
 Clarity Grade **VS 1**
 Cut Grade **EXCELLENT**
 Polish **EXCELLENT**
 Symmetry **VERY GOOD**
 Fluorescence **SLIGHT**
 Inscription(s) **IGI LG719562534**

Comments: This Laboratory Grown Diamond was created by Chemical Vapor Deposition (CVD) growth process. Indications of post-growth treatment.



THIS DOCUMENT WAS PRODUCED WITH THE FOLLOWING SECURITY MEASURES: SPECIAL DOCUMENT PAPER, INK SCREENS, WATERMARK, BACKGROUND DESIGNS, HOLOGRAM AND OTHER SECURITY FEATURES NOT LISTED AND DO EXCEED DOCUMENT SECURITY INDUSTRY GUIDELINES.