



ELECTRONIC COPY

LG719562533
Report verification at igi.org



July 31, 2025
IGI Report Number **LG719562533**
Description **LABORATORY GROWN DIAMOND**
Shape and Cutting Style **FREEFORM MIXED CUT**
Measurements **9.11 X 12.43 X 6.20 MM**
GRADING RESULTS
Carat Weight **5.65 CARATS**
Color Grade **FANCY VIVID PINK**
Clarity Grade **VS 1**

LABORATORY GROWN DIAMOND REPORT

July 31, 2025
IGI Report Number **LG719562533**
Description **LABORATORY GROWN DIAMOND**
Shape and Cutting Style **FREEFORM MIXED CUT**
Measurements **9.11 X 12.43 X 6.20 MM**

GRADING RESULTS

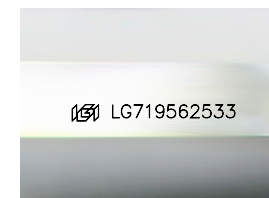
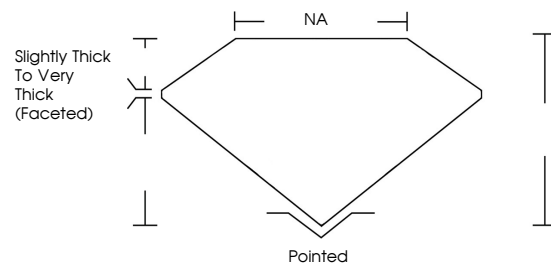
Carat Weight **5.65 CARATS**
Color Grade **FANCY VIVID PINK**
Clarity Grade **VS 1**

ADDITIONAL GRADING INFORMATION

Polish **EXCELLENT**
Symmetry **EXCELLENT**
Fluorescence **STRONG**
Inscription(s) **LG719562533**

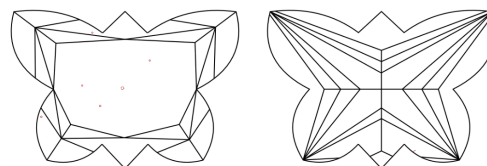
Comments: This Laboratory Grown Diamond was created by Chemical Vapor Deposition (CVD) growth process. Indications of post-growth treatment.

PROPORTIONS



Sample Image Used

CLARITY CHARACTERISTICS



KEY TO SYMBOLS

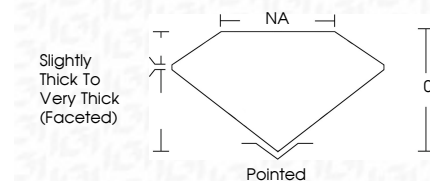
Red symbols indicate internal characteristics.
Green symbols indicate external characteristics.

COLOR

D E F G H I J Faint Very Light Light

CLARITY

IF	VS ¹⁻²	VS ¹⁻²	SI ¹⁻²	I ¹⁻³
Internally Flawless	Very Very Slightly Included	Very Slightly Included	Slightly Included	Included



ADDITIONAL GRADING INFORMATION

Polish **EXCELLENT**
Symmetry **EXCELLENT**
Fluorescence **STRONG**
Inscription(s) **LG719562533**
Comments: This Laboratory Grown Diamond was created by Chemical Vapor Deposition (CVD) growth process. Indications of post-growth treatment.



July 31, 2025
IGI Report No LG719562533
FREEFORM MIXED CUT
9.11 X 12.43 X 6.20 MM
5.65 CARATS
FANCY VIVID PINK
VS 1
0%
NA
Slightly Thick To Very Thick (Faceted)
Pointed
EXCELLENT
EXCELLENT
STRONG
IGI LG719562533
Comments: This Laboratory Grown Diamond was created by Chemical Vapor Deposition (CVD) growth process. Indications of post-growth treatment.