



ELECTRONIC COPY

LG719562518
Report verification at igi.org



August 1, 2025

IGI Report Number **LG719562518**

Description **LABORATORY GROWN DIAMOND**

Shape and Cutting Style **CUT CORNERED
RECTANGULAR MODIFIED
BRILLIANT**

Measurements **9.72 X 6.38 X 4.13 MM**

GRADING RESULTS

Carat Weight **2.46 CARATS**

Color Grade **FANCY VIVID PINK**

Clarity Grade **VVS 2**

LABORATORY GROWN DIAMOND REPORT

August 1, 2025

IGI Report Number **LG719562518**

Description **LABORATORY GROWN DIAMOND**

Shape and Cutting Style **CUT CORNERED RECTANGULAR
MODIFIED BRILLIANT**

Measurements **9.72 X 6.38 X 4.13 MM**

GRADING RESULTS

Carat Weight **2.46 CARATS**

Color Grade **FANCY VIVID PINK**

Clarity Grade **VVS 2**

ADDITIONAL GRADING INFORMATION

Polish **EXCELLENT**

Symmetry **EXCELLENT**

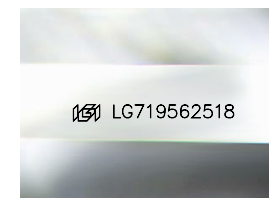
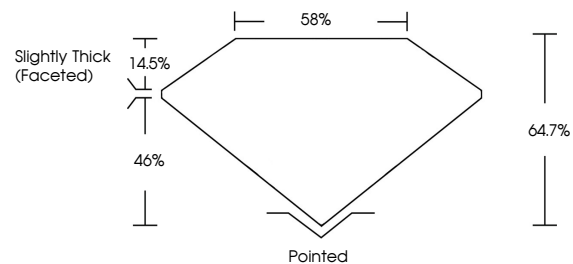
Fluorescence **STRONG**

Inscription(s) **IGI LG719562518**

Comments: This Laboratory Grown Diamond was created by Chemical Vapor Deposition (CVD) growth process.

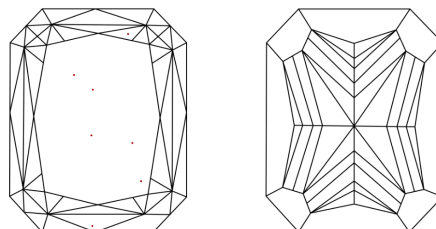
Indications of post-growth treatment.

PROPORTIONS



Sample Image Used

CLARITY CHARACTERISTICS



KEY TO SYMBOLS

Red symbols indicate internal characteristics.
Green symbols indicate external characteristics.

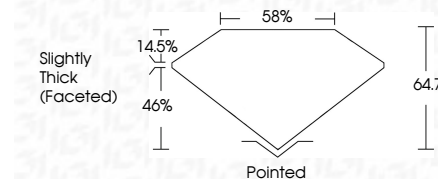
COLOR

D E F G H I J Faint Very Light Light

CLARITY

IF VVS¹⁻² VS¹⁻² SI¹⁻² I¹⁻³

Internally Flawless Very Very Slightly Included Very Slightly Included Slightly Included Included



ADDITIONAL GRADING INFORMATION

Polish **EXCELLENT**

Symmetry **EXCELLENT**

Fluorescence **STRONG**

Inscription(s) **IGI LG719562518**

Comments: This Laboratory Grown Diamond was created by Chemical Vapor Deposition (CVD) growth process. Indications of post-growth treatment.



IGI



August 1, 2025
IGI Report No LG719562518
CUT CORNERED RECT. MODIFIED BRILLIANT
9.72 X 6.38 X 4.13 MM
2.46 CARATS
FANCY VIVID PINK
VVS 2
64.7%
46%
Slightly Thick (Faceted)
Pointed
EXCELLENT
EXCELLENT
STRONG
IGI LG719562518

Comments: This Laboratory Grown Diamond was created by Chemical Vapor Deposition (CVD) growth process. Indications of post-growth treatment.