



**ELECTRONIC COPY**

## LABORATORY GROWN DIAMOND REPORT

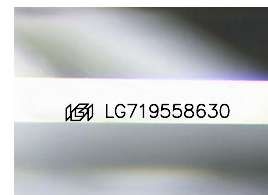
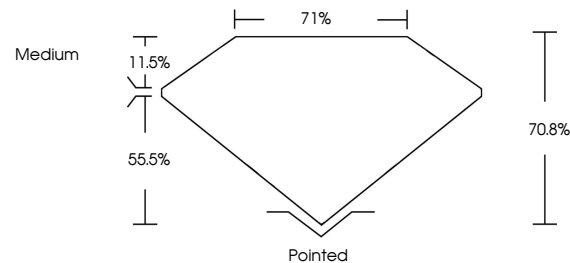
LG719558630  
Report verification at [igi.org](https://igi.org)

June 28, 2025	
IGI Report Number	LG719558630
Description	LABORATORY GROWN DIAMOND
Shape and Cutting Style	PRINCESS CUT
Measurements	6.28 X 6.17 X 4.37 MM
GRADING RESULTS	
Carat Weight	1.50 CARAT
Color Grade	D
Clarity Grade	VS 1

### ADDITIONAL GRADING INFORMATION

Polish	VERY GOOD
Symmetry	VERY GOOD
Fluorescence	NONE
Inscription(s)	 LG719558630
Comments: This Laboratory Grown Diamond was created by Chemical Vapor Deposition (CVD) growth process.	
Type IIa	

## PROPORTIONS



Sample Image Used

## COLOR

D E F G H I J Faint Very Light Light

## CLARITY


IF	VS <sup>1-2</sup>	VS <sup>1-2</sup>	SI <sup>1-2</sup>	I <sup>1-3</sup>
Internally Flawless	Very Very Slightly Included	Very Slightly Included	Slightly Included	Included

## LABORATORY GROWN DIAMOND REPORT



June 28, 2025	
IGI Report Number	LG719558630
Description	LABORATORY GROWN DIAMOND
Shape and Cutting Style	PRINCESS CUT
Measurements	6.28 X 6.17 X 4.37 MM
GRADING RESULTS	
Carat Weight	1.50 CARAT
Color Grade	D
Clarity Grade	VS 1

### ADDITIONAL GRADING INFORMATION

Polish	VERY GOOD
Symmetry	VERY GOOD
Fluorescence	NONE
Inscription(s)	 LG719558630
<p>Comments: This Laboratory Grown Diamond was created by Chemical Vapor Deposition (CVD) growth process.</p> <p>Type IIa</p>	



© IGI 2020, International Gemological Institute

FD - 10 20



THIS DOCUMENT WAS PRODUCED WITH THE FOLLOWING SECURITY MEASURES: SPECIAL DOCUMENT PAPER, INK SCREENS, WATERMARK, BACKGROUND DESIGNS, HOLOGRAM AND OTHER SECURITY FEATURES NOT LISTED AND DO EXCEED DOCUMENT SECURITY INDUSTRY GUIDELINES

**www.igi.org**

June 28, 2025  
 IGI Report No LG719558630  
 PRINCESS CUT

1.50 CARAT	VS 1	70.6%	71%	Medium	Painted	VERY GOOD	VERY GOOD	NONE	None (1.50 carat)
1.50 CARAT	D								

**Comments:**  
This Laboratory Grown Diamond was  
created by Chemical Vapor Deposition  
(CVD) growth process.