



ELECTRONIC COPY

LG719555420
Report verification at igi.org



July 14, 2025
IGI Report Number **LG719555420**
Description **LABORATORY GROWN DIAMOND**
Shape and Cutting Style **ROUND BRILLIANT**
Measurements **8.48 - 8.51 X 5.21 MM**
GRADING RESULTS
Carat Weight **2.32 CARATS**
Color Grade **FANCY VIVID GREEN**
Clarity Grade **VS 1**
Cut Grade **IDEAL**

July 14, 2025
IGI Report Number **LG719555420**
Description **LABORATORY GROWN DIAMOND**
Shape and Cutting Style **ROUND BRILLIANT**
Measurements **8.48 - 8.51 X 5.21 MM**

GRADING RESULTS

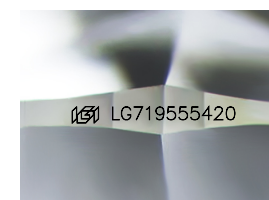
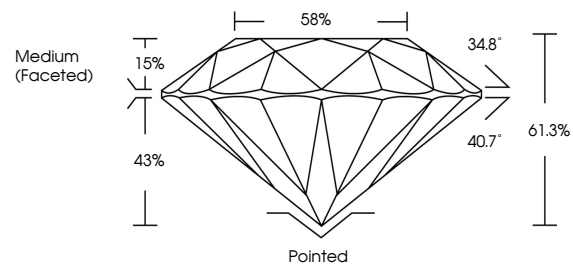
Carat Weight **2.32 CARATS**
Color Grade **FANCY VIVID GREEN**
Clarity Grade **VS 1**
Cut Grade **IDEAL**

ADDITIONAL GRADING INFORMATION

Polish **EXCELLENT**
Symmetry **EXCELLENT**
Fluorescence **NONE**
Inscription(s) **IGI LG719555420**

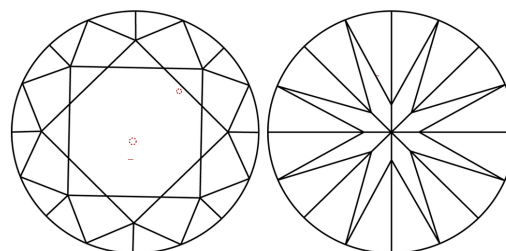
Comments: This Laboratory Grown Diamond was created by High Pressure High Temperature (HPHT) growth process.
Indications of post-growth treatment.

PROPORTIONS



Sample Image Used

CLARITY CHARACTERISTICS



KEY TO SYMBOLS

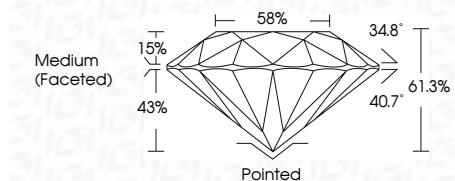
Red symbols indicate internal characteristics.
Green symbols indicate external characteristics.

COLOR

D E F G H I J Faint Very Light Light

CLARITY

IF	VS ¹⁻²	VS ¹⁻²	SI ¹⁻²	I ¹⁻³
Internally Flawless	Very Very Slightly Included	Very Slightly Included	Slightly Included	Included



ADDITIONAL GRADING INFORMATION

Polish **EXCELLENT**
Symmetry **EXCELLENT**
Fluorescence **NONE**
Inscription(s) **IGI LG719555420**
Comments: This Laboratory Grown Diamond was created by High Pressure High Temperature (HPHT) growth process.
Indications of post-growth treatment.



IGI



July 14, 2025
IGI Report No LG719555420
ROUND BRILLIANT
8.48 - 8.51 X 5.21 MM
2.32 CARATS
FANCY VIVID GREEN
VS 1
IDEAL
61.3%
58%
Medium (Faceted)
Pointed
EXCELLENT
EXCELLENT
NONE
IGI LG719555420
Comments: This Laboratory Grown Diamond was created by High Pressure High Temperature (HPHT) growth process.
Indications of post-growth treatment.