



ELECTRONIC COPY

LG719554432
Report verification at igi.org



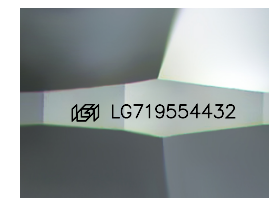
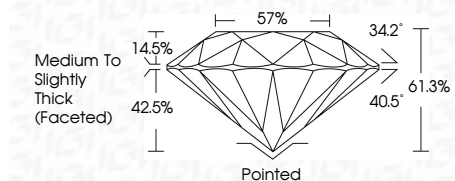
July 13, 2025

IGI Report Number **LG719554432**
Description **LABORATORY GROWN DIAMOND**

Shape and Cutting Style **ROUND BRILLIANT**
Measurements **7.17 - 7.20 X 4.40 MM**

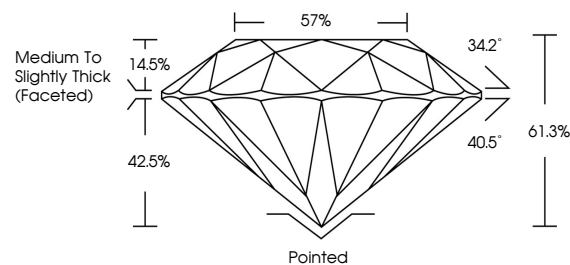
GRADING RESULTS

Carat Weight **1.41 CARAT**
Color Grade **FANCY INTENSE BLUE**
Clarity Grade **VS 1**
Cut Grade **IDEAL**

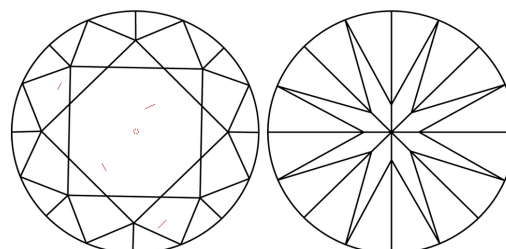


Sample Image Used

PROPORTIONS



CLARITY CHARACTERISTICS



KEY TO SYMBOLS

Red symbols indicate internal characteristics.
Green symbols indicate external characteristics.

COLOR

D E F G H I J Faint Very Light Light

CLARITY

IF	VS ¹⁻²	VS ¹⁻²	SI ¹⁻²	I ¹⁻³
Internally Flawless	Very Very Slightly Included	Very Slightly Included	Slightly Included	Included

ADDITIONAL GRADING INFORMATION

Polish **EXCELLENT**
Symmetry **EXCELLENT**
Fluorescence **NONE**
Inscription(s) **IGI LG719554432**

Comments: This Laboratory Grown Diamond was created by High Pressure High Temperature (HPHT) growth process. Indications of post-growth treatment.



July 13, 2025
IGI Report No LG719554432
ROUND BRILLIANT

1.41 CARAT
Carat Weight
FANCY INTENSE BLUE
Color Grade
VS 1
Clarity Grade
IDEAL
Cut Grade
61.3%
Depth
57%
Table
Medium To Slightly Thick (Faceted)
Girdle

Pointed
Culet
EXCELLENT
Polish
EXCELLENT
Symmetry
EXCELLENT
Fluorescence
NONE
Inscription(s)
IGI LG719554432

Comments: This Laboratory Grown Diamond was created by High Pressure High Temperature (HPHT) growth process. Indications of post-growth treatment.