



ELECTRONIC COPY

LG719554029
Report verification at igi.org



July 14, 2025
IGI Report Number **LG719554029**
Description **LABORATORY GROWN DIAMOND**
Shape and Cutting Style **CUSHION MODIFIED BRILLIANT**
Measurements **11.21 X 8.29 X 5.39 MM**
GRADING RESULTS
Carat Weight **4.05 CARATS**
Color Grade **FANCY VIVID BLUE**
Clarity Grade **SI 1**

LABORATORY GROWN DIAMOND REPORT

July 14, 2025
IGI Report Number **LG719554029**
Description **LABORATORY GROWN DIAMOND**
Shape and Cutting Style **CUSHION MODIFIED BRILLIANT**
Measurements **11.21 X 8.29 X 5.39 MM**

GRADING RESULTS

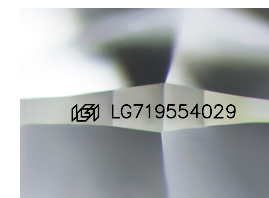
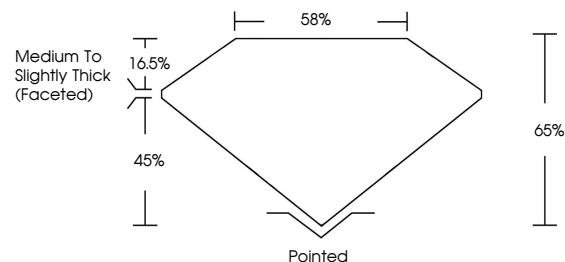
Carat Weight **4.05 CARATS**
Color Grade **FANCY VIVID BLUE**
Clarity Grade **SI 1**

ADDITIONAL GRADING INFORMATION

Polish **EXCELLENT**
Symmetry **EXCELLENT**
Fluorescence **NONE**
Inscription(s) **IGI LG719554029**

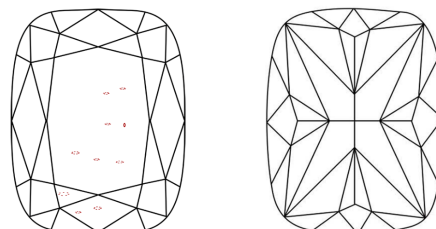
Comments: This Laboratory Grown Diamond was created by Chemical Vapor Deposition (CVD) growth process. Indications of post-growth treatment.

PROPORTIONS



Sample Image Used

CLARITY CHARACTERISTICS



KEY TO SYMBOLS

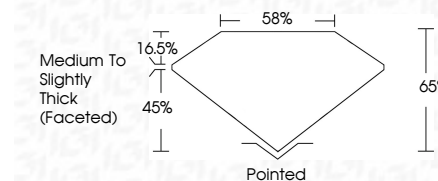
Red symbols indicate internal characteristics.
Green symbols indicate external characteristics.

COLOR

D E F G H I J Faint Very Light Light

CLARITY

IF	VS ¹⁻²	VS ¹⁻²	SI ¹⁻²	I ¹⁻³
Internally Flawless	Very Very Slightly Included	Very Slightly Included	Slightly Included	Included



ADDITIONAL GRADING INFORMATION

Polish **EXCELLENT**
Symmetry **EXCELLENT**
Fluorescence **NONE**
Inscription(s) **IGI LG719554029**
Comments: This Laboratory Grown Diamond was created by Chemical Vapor Deposition (CVD) growth process. Indications of post-growth treatment.



July 14, 2025
IGI Report No **LG719554029**
CUSHION MODIFIED BRILLIANT
4.05 CARATS
Carat Weight **FANCY VIVID BLUE**
Color Grade **SI 1**
Depth **65%**
Table **16.5%**
Girdle **Medium to Slightly Thick (Faceted)**
Culet **Pointed**
Polish **EXCELLENT**
Symmetry **EXCELLENT**
Fluorescence **NONE**
Inscription(s) **IGI LG719554029**

Comments: This Laboratory Grown Diamond was created by Chemical Vapor Deposition (CVD) growth process. Indications of post-growth treatment.