



ELECTRONIC COPY

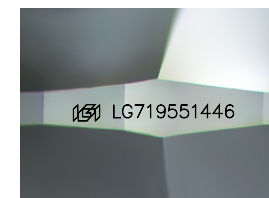
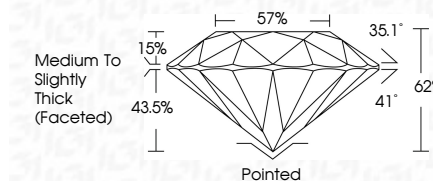
LG719551446
Report verification at igi.org



June 27, 2025
IGI Report Number LG719551446
Description LABORATORY GROWN DIAMOND
Shape and Cutting Style ROUND BRILLIANT
Measurements 13.36 - 13.39 X 8.29 MM

GRADING RESULTS

Carat Weight 9.13 CARATS
Color Grade F
Clarity Grade VS 1
Cut Grade IDEAL



Sample Image Used

ADDITIONAL GRADING INFORMATION

Polish EXCELLENT
Symmetry EXCELLENT
Fluorescence NONE
Inscription(s) IGI LG719551446
Comments: HEARTS & ARROWS
This Laboratory Grown Diamond was created by Chemical Vapor Deposition (CVD) growth process. Type IIa



June 27, 2025
IGI Report No LG719551446
ROUND BRILLIANT
13.36 - 13.39 X 8.29 MM
9.13 CARATS
Color Grade F
Clarity Grade VS 1
Cut Grade IDEAL
Depth 62%
Table 57%
Medium To Slightly Thick (Faceted)
Cutler Pointed
Polish EXCELLENT
Symmetry EXCELLENT
Fluorescence NONE
Inscriptions(s) IGI LG719551446
Comments: HEARTS & ARROWS
This Laboratory Grown Diamond was created by Chemical Vapor Deposition (CVD) growth process. Type IIa

June 27, 2025
IGI Report Number LG719551446
Description LABORATORY GROWN DIAMOND
Shape and Cutting Style ROUND BRILLIANT
Measurements 13.36 - 13.39 X 8.29 MM

GRADING RESULTS

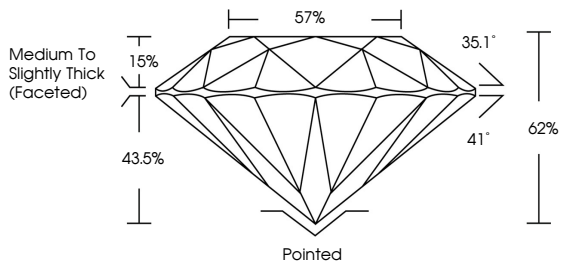
Carat Weight 9.13 CARATS
Color Grade F
Clarity Grade VS 1
Cut Grade IDEAL

ADDITIONAL GRADING INFORMATION

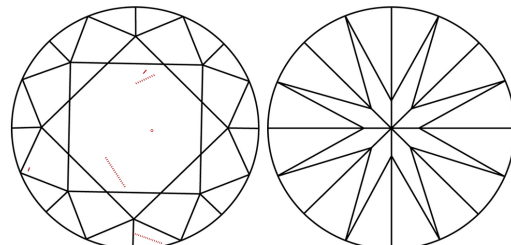
Polish EXCELLENT
Symmetry EXCELLENT
Fluorescence NONE
Inscription(s) IGI LG719551446

Comments: HEARTS & ARROWS
This Laboratory Grown Diamond was created by Chemical Vapor Deposition (CVD) growth process. Type IIa

PROPORTIONS



CLARITY CHARACTERISTICS



KEY TO SYMBOLS

Red symbols indicate internal characteristics.
Green symbols indicate external characteristics.



COLOR

Table with columns D, E, F, G, H, I, J and color descriptions: Faint, Very Light, Light

CLARITY

Table with columns IF, VS 1-2, VS 1-2, SI 1-2, I 1-3 and descriptions: Internally Flawless, Very Very Slightly Included, Very Slightly Included, Slightly Included, Included

