

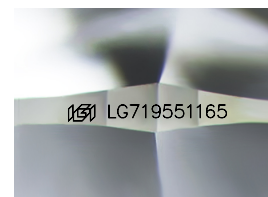
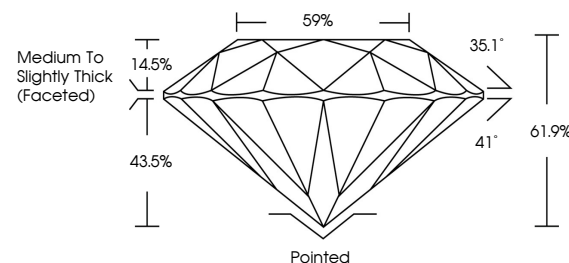


ELECTRONIC COPY

LABORATORY GROWN DIAMOND REPORT

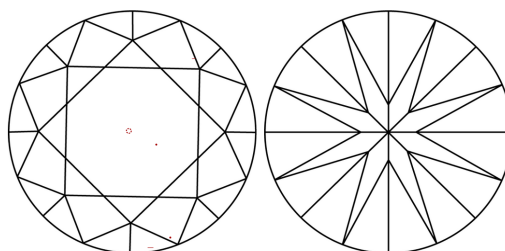
LG719551165
Report verification at igi.org

PROPORTIONS



Sample Image Used

CLARITY CHARACTERISTICS



KEY TO SYMBOLS

Red symbols indicate internal characteristics.
Green symbols indicate external characteristics.

COLOR

D E F G H I J Faint Very Light Light

CLARITY

IF WS¹⁻² VS¹⁻² SI¹⁻² |¹⁻³

Internally Flawless	Very Very Slightly Included	Very Slightly Included	Slightly Included	Included
------------------------	--------------------------------	---------------------------	----------------------	----------



July 8, 2025

IGI Report Number **LG719551165**Description **LABORATORY GROWN DIAMOND**Shape and Cutting Style **ROUND BRILLIANT**

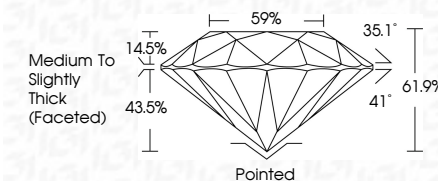
Measurements 7.29 - 7.36 X 4.52 MM

GRADING RESULTS

Carat Weight **1.50 CARAT**

Color Grade **FANCY VIVID BLUE**Clarity Grade **VVS 2**

Cut Grade **IDEAL**



ADDITIONAL GRADING INFORMATION

Polish **EXCELLENT**Symmetry **EXCELLENT**Fluorescence **NONE**Inscription(s)  LG719551165

Comments: This Laboratory Grown Diamond was created by High Pressure High Temperature (HPHT) growth process.
Indications of post-growth treatment.



© IGI 2020, International Gemological Institute

FD - 10 20

www.igi.org



THIS DOCUMENT WAS PRODUCED WITH THE FOLLOWING SECURITY MEASURES: SPECIAL DOCUMENT PAPER, INK SCREENS, WATERMARK, BACKGROUND DESIGNS, HOLOGRAM AND OTHER SECURITY FEATURES NOT LISTED AND DO EXCEED DOCUMENT SECURITY INDUSTRY GUIDELINE

JUN 6, 2025	IGI Report No LG719551165	ROUND BRILLANT	1.50 CARAT BLUE	VVS 2	IDEAL	61.9%	Medium to Slightly Thick Facet(s)	Pointed	EXCELLENT	EXCELLENT	NONE	LGP719551165	Comments: This Laboratory Grown Diamond was created by High Pressure High Temperature (HPHT) growth process. Indications of post-growth treatment.
			FANCY VIVID BLUE	CLS Grade	Cut Grade	Depth	Table	Girdle	Symmetry	Fluorescence	Inclusions(c)		