



INTERNATIONAL GEMOLOGICAL INSTITUTE

ELECTRONIC COPY

LABORATORY GROWN DIAMOND REPORT

June 30, 2025
IGI Report Number **LG719550434**
Description **LABORATORY GROWN DIAMOND**
Shape and Cutting Style **PEAR BRILLIANT**
Measurements **5.84 X 3.88 X 2.59 MM**

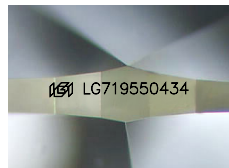
GRADING RESULTS

Carat Weight **0.33 CARAT**
Color Grade **E**
Clarity Grade **VVS 2**

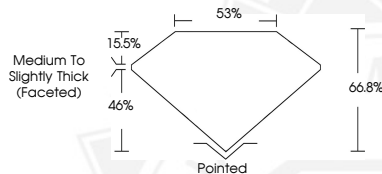
ADDITIONAL GRADING INFORMATION

Polish **VERY GOOD**
Symmetry **VERY GOOD**
Fluorescence **NONE**
Inscription(s) **IGI LG719550434**

Comments: This Laboratory Grown Diamond was created by
Chemical Vapor Deposition (CVD) growth process.
Type IIa



Sample Image Used



June 30, 2025
IGI Report Number **LG719550434**
PEAR BRILLIANT
LABORATORY GROWN DIAMOND
5.84 X 3.88 X 2.59 MM
Carat Weight **0.33 CARAT**
Color Grade **E**
Clarity Grade **VVS 2**
Polish **VERY GOOD**
Symmetry **VERY GOOD**
Fluorescence **NONE**
Inscription(s) **IGI LG719550434**
Comments: This Laboratory Grown Diamond was created by
Chemical Vapor Deposition (CVD) growth process. Type IIa



June 30, 2025
IGI Report Number **LG719550434**
PEAR BRILLIANT
LABORATORY GROWN DIAMOND
5.84 X 3.88 X 2.59 MM
Carat Weight **0.33 CARAT**
Color Grade **E**
Clarity Grade **VVS 2**
Polish **VERY GOOD**
Symmetry **VERY GOOD**
Fluorescence **NONE**
Inscription(s) **IGI LG719550434**
Comments: This Laboratory Grown Diamond was created by
Chemical Vapor Deposition (CVD) growth process. Type IIa



THIS DOCUMENT WAS PRODUCED WITH THE FOLLOWING SECURITY MEASURES: SPECIAL DOCUMENT PAPER, INK SCREENS, WATERMARK, BACKGROUND DESIGNS, HOLOGRAM AND OTHER SECURITY FEATURES NOT LISTED AND DO EXCEED DOCUMENT SECURITY INDUSTRY GUIDELINES.

For terms & conditions and to verify this report, please visit www.igi.org