



**ELECTRONIC COPY**

## LABORATORY GROWN DIAMOND REPORT

|                         |                                 |
|-------------------------|---------------------------------|
| July 7, 2025            |                                 |
| IGI Report Number       | LG719549457                     |
| Description             | LABORATORY GROWN DIAMOND        |
| Shape and Cutting Style | HEXAGONAL MODIFIED<br>BRILLIANT |
| Measurements            | 14.20 X 7.68 X 5.01 MM          |

## GRADING RESULTS

|               |             |
|---------------|-------------|
| Carat Weight  | 3.32 CARATS |
| Color Grade   | E           |
| Clarity Grade | VVS 2       |

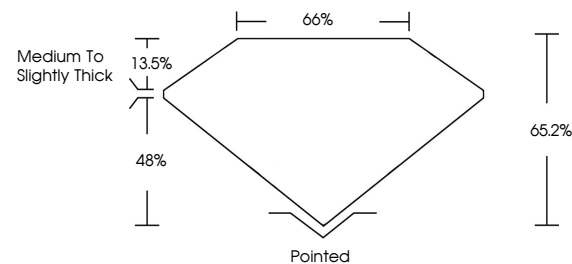
### ADDITIONAL GRADING INFORMATION

|                |   |
|----------------|---|
| Polish         | EXCELLENT   |
| Symmetry       | EXCELLENT   |
| Fluorescence   | NONE  |
| Inscription(s) |  LG719549457 |

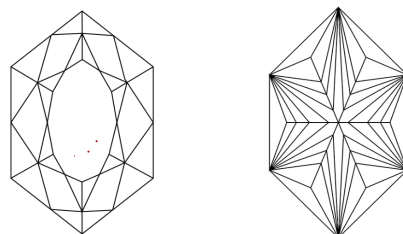
Comments: This Laboratory Grown Diamond was created by Chemical Vapor Deposition (CVD) growth process and may include post-growth treatment.  
Type IIa

LG719549457  
Report verification at [igi.org](https://igi.org)

## PROPORTIONS

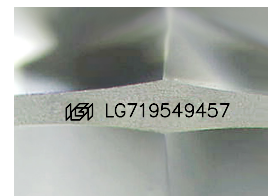


## CLARITY CHARACTERISTICS



## KEY TO SYMBOLS

Red symbols indicate internal characteristics.  
Green symbols indicate external characteristics.



Sample Image Used

**COLOR**

D E F G H I J Faint Very Light Light

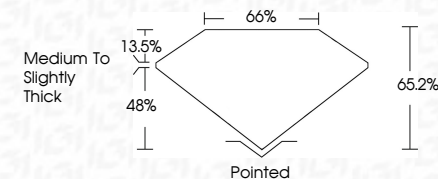
## CLARITY

| IF                  | VS <sup>1-2</sup>           | VS <sup>1-2</sup>      | SI <sup>1-2</sup> | I <sup>1-3</sup> |
|---------------------|-----------------------------|------------------------|-------------------|------------------|
| Internally Flawless | Very Very Slightly Included | Very Slightly Included | Slightly Included | Included         |

## LABORATORY GROWN DIAMOND REPORT



|                         |                                 |
|-------------------------|---------------------------------|
| July 7, 2025            |                                 |
| IGI Report Number       | LG719549457                     |
| Description             | LABORATORY GROWN DIAMOND        |
| Shape and Cutting Style | HEXAGONAL MODIFIED<br>BRILLIANT |
| Measurements            | 14.20 X 7.68 X 5.01 MM          |
| GRADING RESULTS         |                                 |
| Carat Weight            | 3.32 CARATS                     |
| Color Grade             | E                               |
| Clarity Grade           | VVS 2                           |



### ADDITIONAL GRADING INFORMATION

|                |   |
|----------------|---|
| Polish         | EXCELLENT   |
| Symmetry       | EXCELLENT   |
| Fluorescence   | NONE  |
| Inscription(s) |  LG719549457 |

Comments: This Laboratory Grown Diamond was created by Chemical Vapor Deposition (CVD) growth process and may include post-growth treatment.  
Type IIa



© IGI 2020, International Gemological Institute

FD - 10 20



THIS DOCUMENT WAS PRODUCED WITH THE FOLLOWING SECURITY MEASURES: SPECIAL DOCUMENT PAPER, INK SCREENS, WATERMARK, BACKGROUND DESIGNS, HOLOGRAM AND OTHER SECURITY FEATURES NOT LISTED AND DO EXCEED DOCUMENT SECURITY INDUSTRY GUIDELINES

**www.igi.org**

