



ELECTRONIC COPY

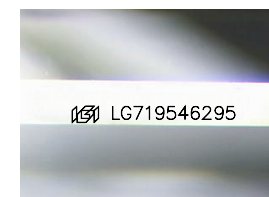
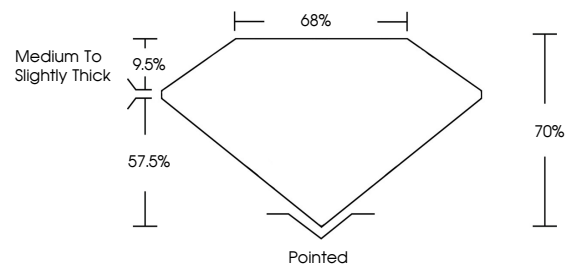
LG719546295
Report verification at igi.org



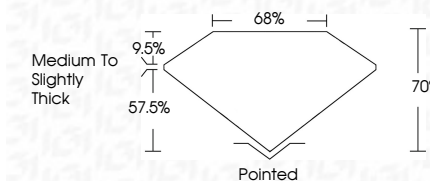
July 1, 2025
IGI Report Number **LG719546295**
Description **LABORATORY GROWN DIAMOND**
Shape and Cutting Style **PRINCESS CUT**
Measurements **6.54 X 6.37 X 4.46 MM**
GRADING RESULTS
Carat Weight **1.60 CARAT**
Color Grade **D**
Clarity Grade **VS 1**

July 1, 2025
IGI Report Number **LG719546295**
Description **LABORATORY GROWN DIAMOND**
Shape and Cutting Style **PRINCESS CUT**
Measurements **6.54 X 6.37 X 4.46 MM**
GRADING RESULTS
Carat Weight **1.60 CARAT**
Color Grade **D**
Clarity Grade **VS 1**

PROPORTIONS



Sample Image Used



ADDITIONAL GRADING INFORMATION

Polish **VERY GOOD**
Symmetry **EXCELLENT**
Fluorescence **NONE**
Inscription(s) **IGI LG719546295**

Comments: This Laboratory Grown Diamond was created by Chemical Vapor Deposition (CVD) growth process.
Type IIa

COLOR

D E F G H I J Faint Very Light Light

CLARITY

IF	VS ¹⁻²	SI ¹⁻²	I ¹⁻³
Internally Flawless	Very Very Slightly Included	Very Slightly Included	Slightly Included

ADDITIONAL GRADING INFORMATION

Polish **VERY GOOD**
Symmetry **EXCELLENT**
Fluorescence **NONE**
Inscription(s) **IGI LG719546295**
Comments: This Laboratory Grown Diamond was created by Chemical Vapor Deposition (CVD) growth process.
Type IIa



IGI



July 1, 2025
IGI Report No **LG719546295**
PRINCESS CUT
6.54 X 6.37 X 4.46 MM
Carat Weight **1.60 CARAT**
Color Grade **D**
Clarity Grade **VS 1**
Table **70%**
Girdle **65%**
Culet **Medium to Slightly Thick**
Polish **Polished**
Symmetry **VERY GOOD**
Fluorescence **EXCELLENT**
Inscription(s) **NONE**
IGI LG719546295
Comments: This Laboratory Grown Diamond was created by Chemical Vapor Deposition (CVD) growth process.
Type IIa