

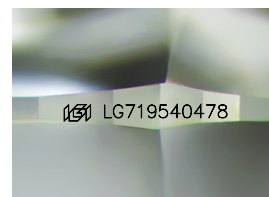
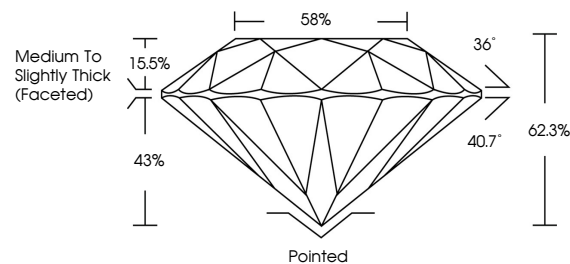


**ELECTRONIC COPY**

## LABORATORY GROWN DIAMOND REPORT

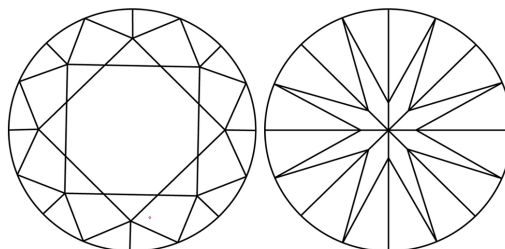
LG719540478  
Report verification at [igi.org](https://igi.org)

## PROPORTIONS



Sample Image Used

## CLARITY CHARACTERISTICS



### KEY TO SYMBOLS

Red symbols indicate internal characteristics.  
Green symbols indicate external characteristics.

## COLOR

D E F G H I J Faint Very Light Light

## CLARITY

IF      WS<sup>1-2</sup>      VS<sup>1-2</sup>      SI<sup>1-2</sup>      I<sup>1-3</sup>

Internally Flawless	Very Very Slightly Included	Very Slightly Included	Slightly Included	Included
------------------------	--------------------------------	---------------------------	----------------------	----------

## LABORATORY GROWN DIAMOND REPORT



July 2, 2025

IGI Report Number **LG719540478**

Description **LABORATORY GROWN DIAMOND**Shape and Cutting Style **ROUND BRILLIANT**

Measurements 6.46 - 6.51 X 4.04 MM

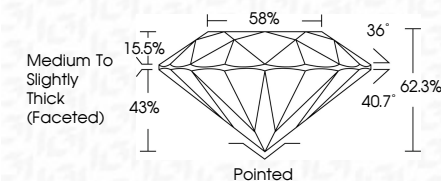
## GRADING RESULTS

Carat Weight 1.07 CARAT

Color Grade E

Clarity Grade **VVS 2**

Cut Grade **IDEAL**



### ADDITIONAL GRADING INFORMATION

Polish **EXCELLENT**Symmetry **EXCELLENT**Fluorescence **NONE**Inscription(s)  LG719540478

Comments: As Grown - No indication of post-growth treatment.

This Laboratory Grown Diamond was created by High Pressure High Temperature (HPHT) growth process.



IG



© IGI 2020, International Gemological Institute

FD - 10 20



THIS DOCUMENT WAS PRODUCED WITH THE FOLLOWING SECURITY MEASURES: SPECIAL DOCUMENT PAPER, INK SCREENS, WATERMARK, BACKGROUND DESIGNS, HOLOGRAM AND OTHER SECURITY FEATURES NOT LISTED AND DO EXCEED DOCUMENT SECURITY INDUSTRY GUIDELINES

**www.igi.org**

<p>JULY 2, 2025</p> <p>Report No LG71954078</p> <p>ROUND BRILLIANT</p>	<p>1.07 CARAT</p> <p>E</p> <p>VVS 2</p> <p>IDEAL</p> <p>62.5%</p> <p>58%</p> <p>Medium to slightly Thick Faceted</p>	<p>Polished</p> <p>EXCELLENT</p> <p>EXCELLENT</p> <p>NONE</p> <p>lg71954078</p>
<p>4.65 X 4.04 MM</p> <p>Color Weight</p> <p>Color Grade</p> <p>Clarity Grade</p> <p>Cut Grade</p> <p>Depth</p> <p>Table</p> <p>Grades</p>	<p>1,07 CARAT</p> <p>E</p> <p>VVS 2</p> <p>IDEAL</p> <p>62.5%</p> <p>58%</p> <p>Medium to slightly Thick Faceted</p>	<p>Polished</p> <p>EXCELLENT</p> <p>EXCELLENT</p> <p>NONE</p> <p>lg71954078</p>