



ELECTRONIC COPY

LABORATORY GROWN DIAMOND REPORT

June 26, 2025
IGI Report Number **LG719540360**

Description **LABORATORY GROWN DIAMOND**

Shape and Cutting Style **CUT CORNERED RECTANGULAR
MODIFIED BRILLIANT**

Measurements **9.85 X 7.30 X 5.12 MM**

GRADING RESULTS

Carat Weight **3.21 CARATS**

Color Grade **F**

Clarity Grade **VVS 2**

ADDITIONAL GRADING INFORMATION

Polish **EXCELLENT**

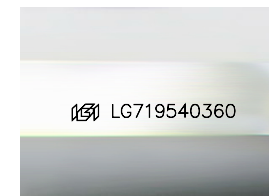
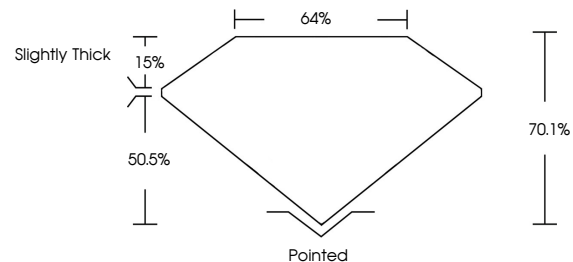
Symmetry **EXCELLENT**

Fluorescence **NONE**

Inscription(s) **IGI LG719540360**

Comments: This Laboratory Grown Diamond was created by Chemical Vapor Deposition (CVD) growth process.
Type IIa

PROPORTIONS



Sample Image Used

COLOR

D E F G H I J Faint Very Light Light

CLARITY

IF	VS ¹⁻²	VS ¹⁻²	SI ¹⁻²	I ¹⁻³
Internally Flawless	Very Very Slightly Included	Very Slightly Included	Slightly Included	Included



June 26, 2025

IGI Report Number **LG719540360**

Description **LABORATORY GROWN DIAMOND**

Shape and Cutting Style **CUT CORNERED
RECTANGULAR MODIFIED
BRILLIANT**

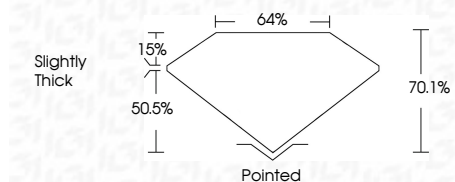
Measurements **9.85 X 7.30 X 5.12 MM**

GRADING RESULTS

Carat Weight **3.21 CARATS**

Color Grade **F**

Clarity Grade **VVS 2**



ADDITIONAL GRADING INFORMATION

Polish **EXCELLENT**

Symmetry **EXCELLENT**

Fluorescence **NONE**

Inscription(s) **IGI LG719540360**

Comments: This Laboratory Grown Diamond was created by Chemical Vapor Deposition (CVD) growth process.
Type IIa



June 26, 2025
IGI Report No LG719540360
CUT CORNERED RECT. MODIFIED BRILLIANT
9.85 X 7.30 X 5.12 MM
3.21 CARATS
F
VVS 2
70.1%
64%
Slightly Thick
Pointed
EXCELLENT
EXCELLENT
NONE
IGI LG719540360
Comments: This Laboratory Grown Diamond was created by Chemical Vapor Deposition (CVD) growth process.
Type IIa