

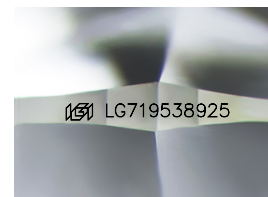
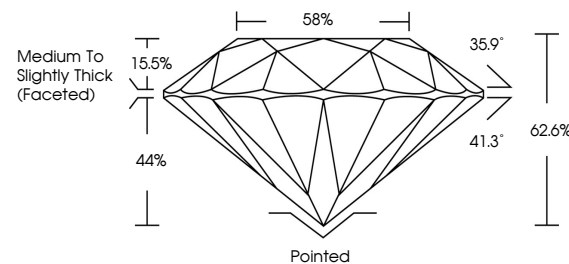


**ELECTRONIC COPY**

## LABORATORY GROWN DIAMOND REPORT

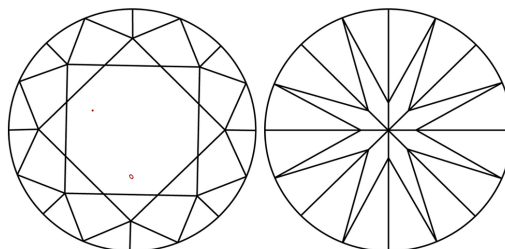
LG719538925  
Report verification at [igi.org](https://igi.org)

## PROPORTIONS



Sample Image Used

## CLARITY CHARACTERISTICS



### KEY TO SYMBOLS

Red symbols indicate internal characteristics.  
Green symbols indicate external characteristics.

## COLOR

D E F G H I J Faint Very Light Light

## CLARITY

IF WS<sup>1-2</sup> VS<sup>1-2</sup> SI<sup>1-2</sup> |<sup>1-3</sup>

|                        |                                |                           |                      |          |
|------------------------|--------------------------------|---------------------------|----------------------|----------|
| Internally<br>Flawless | Very Very<br>Slightly Included | Very<br>Slightly Included | Slightly<br>Included | Included |
|------------------------|--------------------------------|---------------------------|----------------------|----------|



June 26, 2025

IGI Report Number **LG719538925**

|             |                          |
|-------------|--------------------------|
| Description | LABORATORY GROWN DIAMOND |
|-------------|--------------------------|

Shape and Cutting Style **ROUND BRILLIANT**

|              |                       |
|--------------|-----------------------|
| Measurements | 8.15 - 8.18 X 5.11 MM |
|--------------|-----------------------|

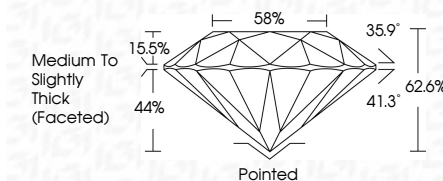
## GRADING RESULTS

Carat Weight **2.09 CARATS**

Color Grade D

Clarity Grade VS 1

Cut Grade **EXCELLENT**



### ADDITIONAL GRADING INFORMATION

Polish **EXCELLENT**Symmetry **EXCELLENT**Fluorescence **NONE**Inscription(s)  LG719538925

Comments: This Laboratory Grown Diamond was created by Chemical Vapor Deposition (CVD) growth process.  
Type IIa



© IGI 2020, International Gemological Institute

FD - 10 20



THIS DOCUMENT WAS PRODUCED WITH THE FOLLOWING SECURITY MEASURES: SPECIAL DOCUMENT PAPER, INK SCREENS, WATERMARK, BACKGROUND DESIGNS, HOLOGRAM AND OTHER SECURITY FEATURES NOT LISTED AND DO EXCEED DOCUMENT SECURITY INDUSTRY GUIDELINES

**www.igi.org**

|                          |                                   |                                      |
|--------------------------|-----------------------------------|--------------------------------------|
| June 24, 2025            | 2.09 CARATS                       |                                      |
| GI Report No. G719339925 | D                                 |                                      |
| ROUND BRILLIANT          | VSI                               |                                      |
|                          | EXCELLENT                         |                                      |
|                          | 62.6%                             |                                      |
|                          | 59%                               |                                      |
|                          | Medium to Slightly Thick (graded) |                                      |
|                          | Pointed                           |                                      |
|                          | EXCELLENT                         |                                      |
|                          | EXCELLENT                         |                                      |
|                          | NONE                              |                                      |
|                          | 489 LG719339925                   |                                      |
|                          |                                   | Comments:                            |
|                          |                                   | This Laboratory Grown Diamond was    |
|                          |                                   | created by Chemical Vapor Deposition |
|                          |                                   | (CVD) growth process.                |
|                          |                                   | Type IIA                             |